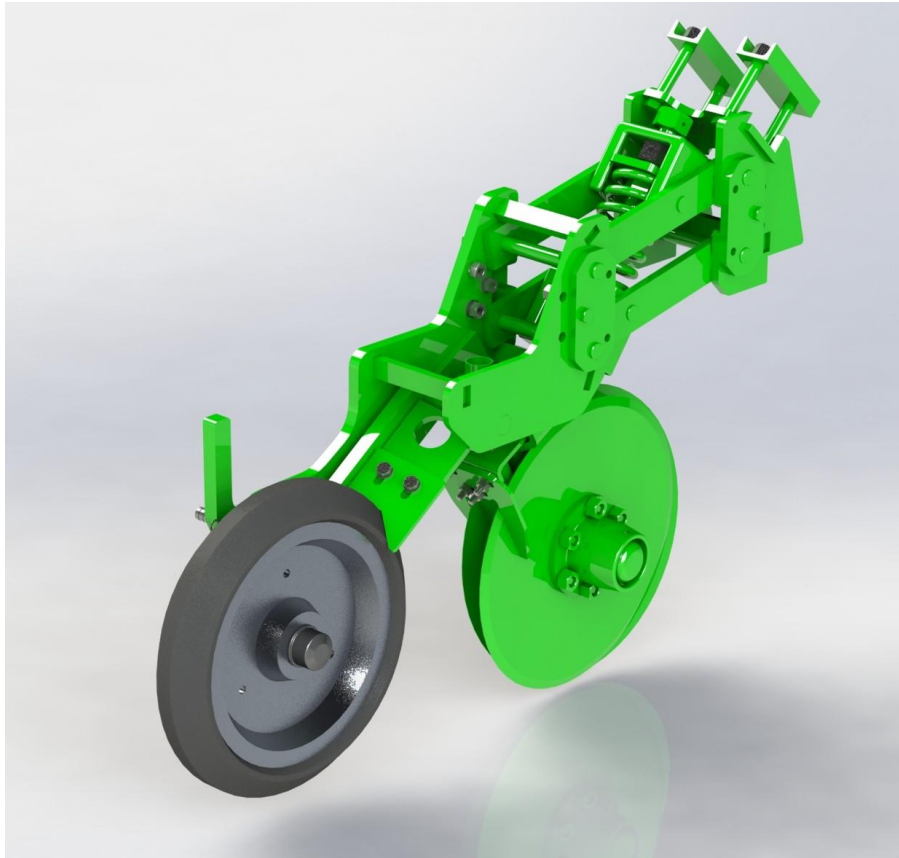




Grow a Better Crop

JOHN SHEARER

Double Disc Opener



**Operators
Manual
137J1**



SAFETY



SAFETY FIRST

DO NOT PUT YOUR FINGERS NEAR AN OPENER WHILE IN OPERATION.

BEWARE OF SHARP EDGES ON DISCS

NEVER STAND DIRECTLY IN THE PATH OF A LOADED SPRING.

PRE-DELIVERY CHECK

1. On delivery of DOUBLE DISC OPENER/S ensure there are no shortages.
2. Check Implement equipment, to ensure as ordered.
3. Check for trans-shipping damage.
4. Check and tighten bolts and nuts
5. Ensure that equipment is fully assembled and operating correctly.
6. Demonstrate and explain operation to the client.
7. Explain terms and conditions of Warranty to client



Congratulations on the purchase of your new JOHN SHEARER PTY LTD implement. You have just joined the growing number of John Shearer customers and we trust that your implement will give you many years of satisfaction. The following information contained in this manual is provided with regards to your implement's operation, maintenance and warranty; however, should you require further assistance, contact your registered John Shearer Dealer.

WARRANTY POLICY

This warranty (**'this Warranty'**) provides information regarding the operation, maintenance and warranty of John Shearer Pty Limited's (**'John Shearer'**) products.

Warranty against Defects

John Shearer warrants to the original purchaser (**'you'** or **'your'**) that any product manufactured by John Shearer (**'Product'**) and sold to you whether directly or through a dealer (**'the Dealer'**) will be free from defects to the extent set out in this Warranty.

John Shearer warrants that any Product or parts of a Product proven to be defective (**'the Defective Product'**) will either be repaired or replaced by John Shearer.

Products will only be proven to be defective by a person appointed by John Shearer. John Shearer holds the discretion to determine whether a Defective Product is to be repaired or replaced.

Any Defective Product must be returned to the Dealer at your cost within 12 months of delivery of the Product to you.

No warranty is given in relation to:

- any Product that has been misused;
- any Product that has been used contrary to its normal and, or intended use;
- any Product that has been used contrary to the recommendations of John Shearer and, or the Dealer;
- any Product that has been altered, modified or had any parts substituted in any way not authorised by John Shearer and, or the Dealer;
- any defect of which you should have reasonably identified by examining the Product or of which you were notified of; and
- general wear and tear during normal use of the Product.

All defects must be reported immediately by you to the Dealer.

Modifications by John Shearer

John Shearer reserves the right at all times to vary, modify and, or improve its Products or parts without notification.

John Shearer has no responsibility to vary, modify and, or improve Products sold to conform with any such modifications.

Freight and Travel Charges

John Shearer accepts no responsibility in relation to:

- travelling and, or freight charges; and

- damage caused during travel and, or freight.

Limitation of Liability

To the fullest extent permitted by law, John Shearer and the Dealer will not be liable for any actions, suits, proceedings, claims, demands, costs, expenses or damages whatsoever which may arise either directly or indirectly in respect of the Product, including but not limited to negligent use of the Product.

To the fullest extent permitted by law, any non-compliance with this Warranty will automatically void any warranty given by John Shearer in relation to the Product. No warranty is given if you have breached any terms and conditions forming part of the contract between you and John Shearer and, or the Dealer by which the Product was sold to you.

John Shearer will not be held responsible for any third party warranties offered in addition to the warranties offered under this Warranty. Any third party warranties are directly between you and the third party offering those warranties.

Consumer Rights

Our goods come with guarantees that cannot be excluded under the Australian Consumer Law. You are entitled to a replacement or refund for a major failure and compensation for any other reasonably foreseeable loss or damage. You are also entitled to have the goods repaired or replaced if the goods fail to be of acceptable quality and the failure does not amount to a major failure.

The warranties given by John Shearer under this Warranty are in addition to your other rights and remedies under the Australian Consumer Law in relation to the Product.

However, to the fullest extent permissible by law, John Shearer does not provide any consumer guarantees which are not required to be given at law.

Service and Maintenance

It is your responsibility to:

- maintain and operate the Product in a safe and correct manner and in accordance with the specifications and operating limitations set out by John Shearer; and
- service the Product regularly in accordance with the recommendations of John Shearer.

Claims

All claims under this Warranty are to be sent to for the attention of Franco Perrotta at John Shearer Pty Ltd. P.O. Box 2466 Regency Park SA 5942

For further assistance, contact the Dealer.

Warranty Provider

This Warranty is provided to you by:

John Shearer Pty Limited
34 Burleigh Ave, Woodville North SA 5012
(08) 8468 4190
info@johnshearer.com.au



Dealer copy

WARRANTY REGISTRATION CARD

DEALER NAME: DEALER TOWN:

IMPLEMENT MODEL: SIZE:

PRODUCT No. (As per price book)..... SERIAL NO.

DEALER'S PRE DELIVERY IMPLEMENT CHECK WHEN DONE..... SIGNATURE.....

PURCHASERS NAME (Full).....

ADDRESS (Full).....

DATE OF PURCHASE:.....

PURCHASER ACKNOWLEDGES THAT THE IMPLEMENT WAS RECEIVED IN GOOD ORDER & CONDITION AND THAT PURCHASERS ATTENTION HAS BEEN DRAWN TO THE TERMS AND CONDITIONS OF THE JOHN SHEARER LIMITED WARRANTY POLICY ENDORSED HERE-ON.

PURCHASERS SIGNATURE.....



**John Shearer Pty Ltd
copy**

WARRANTY REGISTRATION CARD

DEALER NAME: DEALER TOWN:

IMPLEMENT MODEL: SIZE:

PRODUCT No. (As per price book)..... SERIAL NO.

DEALER'S PRE DELIVERY IMPLEMENT CHECK WHEN DONE..... SIGNATURE.....

PURCHASERS NAME (Full).....

ADDRESS (Full).....

DATE OF PURCHASE:.....

PURCHASER ACKNOWLEDGES THAT THE IMPLEMENT WAS RECEIVED IN GOOD ORDER & CONDITION AND THAT PURCHASERS ATTENTION HAS BEEN DRAWN TO THE TERMS AND CONDITIONS OF THE JOHN SHEARER LIMITED WARRANTY POLICY ENDORSED HERE-ON.

PURCHASERS SIGNATURE.....

CUSTOMER'S MACHINERY REGISTER



We ask for your assistance in registering your holdings of equipment. This information can assist us greatly in after sales service, development of new products and customer awareness of Shearer products.

1. Name:.....

Address:.....

..... State:..... Postcode:.....

Phone..... E-mail:.....

2. Type of purchaser (please tick) Owner / Manager Share Farmer Contractor

3. Major activities (please number in order of importance)

<input type="checkbox"/> Sheep and cereal grain	<input type="checkbox"/> Vegetables	<input type="checkbox"/> Sugar
<input type="checkbox"/> Sheep only	<input type="checkbox"/> Poultry	<input type="checkbox"/> Tobacco
<input type="checkbox"/> Cereal Grain Only	<input type="checkbox"/> Pigs	<input type="checkbox"/> Oilseeds
<input type="checkbox"/> Meat Cattle	<input type="checkbox"/> Vineyards	<input type="checkbox"/> Others (please list)
<input type="checkbox"/> Milk Cattle	<input type="checkbox"/> Fruit	<input type="checkbox"/>

4. What is the size of your holding (hectares)?.....

What is the total area of your crop (hectares)?.....

What is your area under cereal crop (hectares)?.....

5. In what town is your associated Shearer dealer? (i.e. either the dealer with whom you normally trade or the one who is closest).....

6. What John Shearer machines do you currently have on your property?

Serial No.	Implement type	Size	Date Delivered	Comments

Thank you for your assistance; please feel free to use the back of this form to make any comments you wish.

OPERATING INSTRUCTIONS

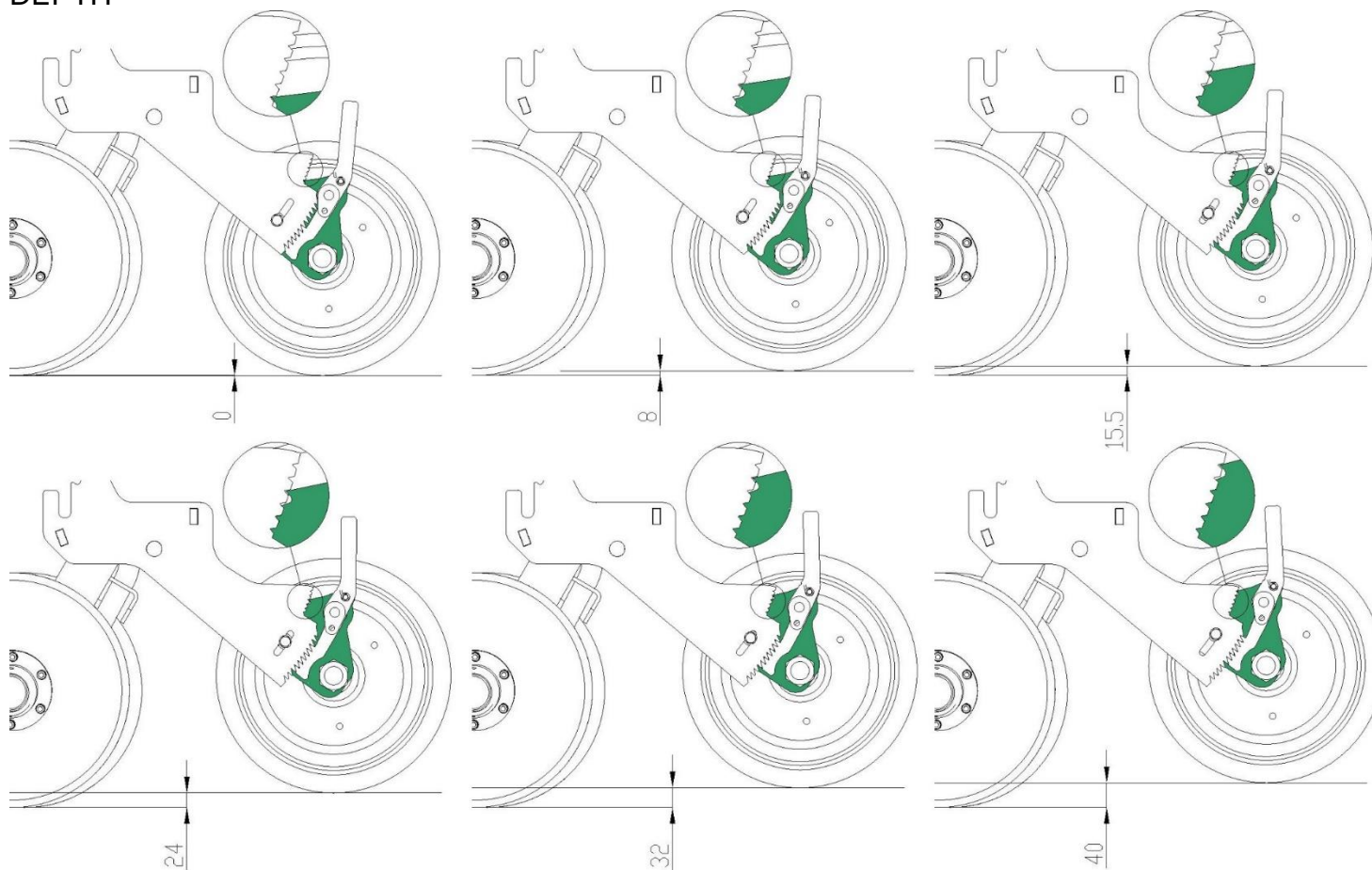
DOWN PRESSURE

For best results, set the spring pressure only enough to ensure penetration. Spring pressure for use in soft ground should be much lower than for hard ground.

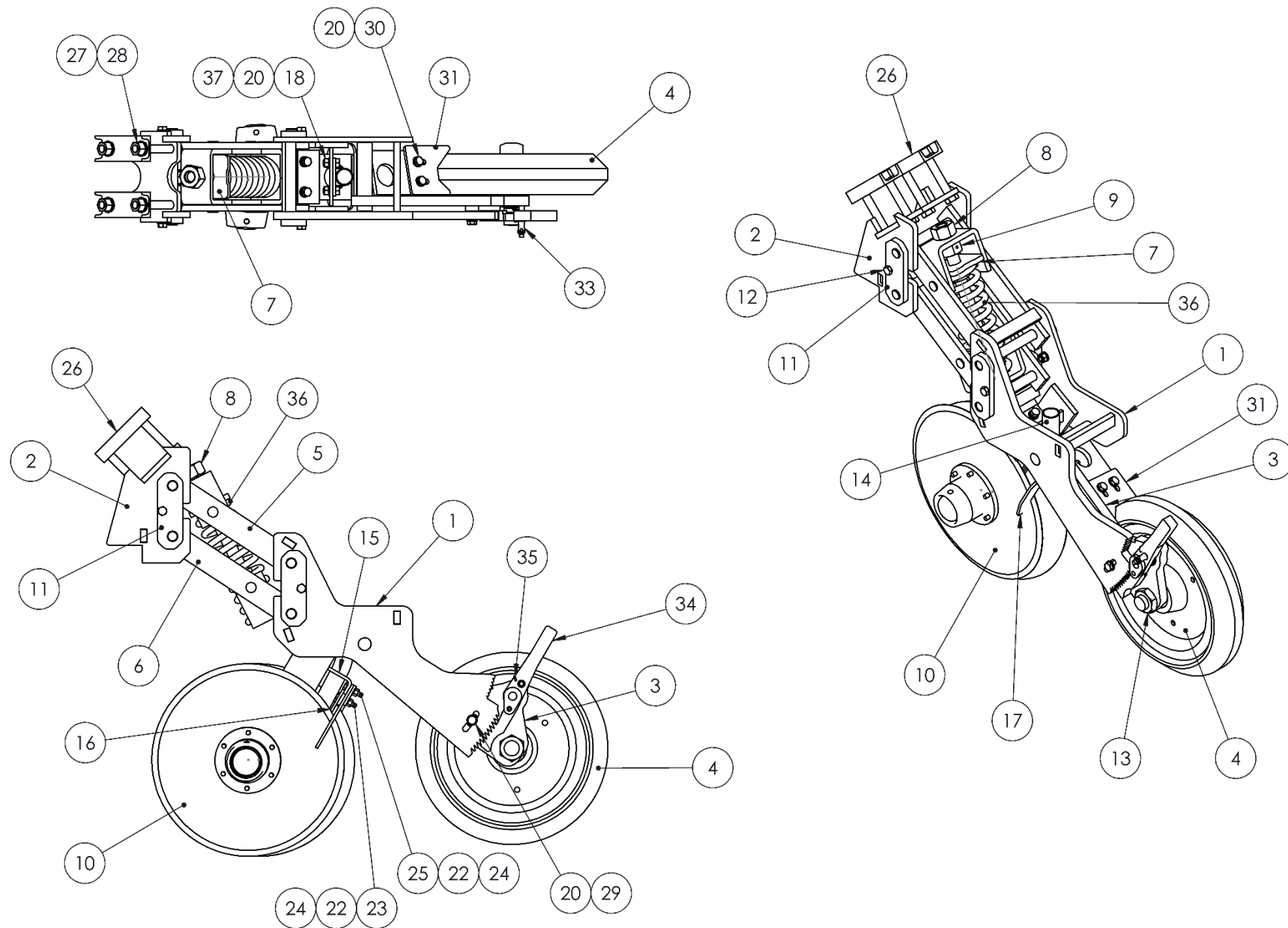
TURNING

Lift the disc clear of the ground when turning to avoid damage.

DEPTH



DOUBLE DISC OPENER ASSEMBLY - SPRING



DOUBLE DISC OPENER ASSEMBLY - SPRING

ITEM	PART No	DESCRIPTION	QTY	ITEM	PART No	DESCRIPTION	QTY
1	43021	WHEEL BRACKET ASSEMBLY	1	36	37384	SPRING, 12mm	1
2	43271A	BEAM BRACKET ASSEMBLY - DIAMOND	1	37	18520	HEX, BOLT - M10 x 25	2
	43271B	BEAM BRACKET ASSEMBLY - SQUARE	1				
3	43047	WHEEL ARM ASSEMBLY	1				
4	43051	PRESS WHEEL ASSEMBLY	1				
5	43013	ARM ASSY, UPPER	1				
6	43068	ARM ASSY, LOWER	1				
7	43023	UPPER SEAT ASSY	1				
8	43046	BOLT, TENSION	1				
9	43274	NUT, DRILLED - M24	1				
10	43272	DISC/HUB ASSEMBLY - PLAIN	2				
	43273	DISC/HUB ASSEMBLY - SCALLOPED	2				
11	43024	PLATE, KEEPER	4				
12	20679	AS 1111.2 - M10 x 35-NN	4				
13	17261J1	AS 1112.4 AB- M30-N	1				
14	43669	SEED TUBE ASSEMBLY	1				
15	43661	SCRAPER FRAME	1				
16	44432	SCRAPER, INTERNAL	1				
17	44431A	SCRAPER, EXTERNAL	2				
18	31993	AS 1112.2 S2- M10-W-N NYLOC	6				
19	18613	HEX, BOLT - M10 x 20	2				
20	FBW4	AS 1237.1 N - 10	11				
21	17776J1	WASHER, SPRING M10	2				
22	34095	AS 1112.2 S2- M8-D-C NYLOC	4				
23		AS-NZS 1390 S - M8 x 40-N Cup Head	2				
24	FBW3	AS 1237.1 N - 8	4				
25	18437	AS 1110.2 - M8 x 35 -C	2				
26	43326	CLAMP	2				
27	FBW8	WASHER, FLAT M16	4				
28	28912	NUT, HEX - M16 NYLOC	4				
29	24214	AS 1110.1 - M10 x 50-N	1				
30	20800	AS 1110.2 - M10 x 30 -C	2				
31	43315	SCRAPER, PRESS WHEEL	1				
32	43929	PLATE, MOUNT	1				
33	45307	PIN, BALL LOCK (PURCH)	1				
34	45306	ARM	1				
35	45312	SPRING	1				

PART No DESCRIPTION**DOUBLE DISC OPENER COMPLETE ASSEMBLIES**

43065 Spring, Diamond Mount, Plain Disc, Single Shoot.

43132 Spring, Square Mount, Plain Disc, Single Shoot

43133 Spring, Diamond Mount, Plain/Scalloped Disc, Single Shoot.

43134 Spring, Square Mount, Plain/Scalloped Disc, Single Shoot.

Torque: 17Nm with Loctite

Allow 1-2mm gap to disc/s

Allow 1-2mm gap to disc/s

Torque: 8.5Nm with Loctite (note: do not tighten with item 32)

Torque: 8.5Nm with Loctite

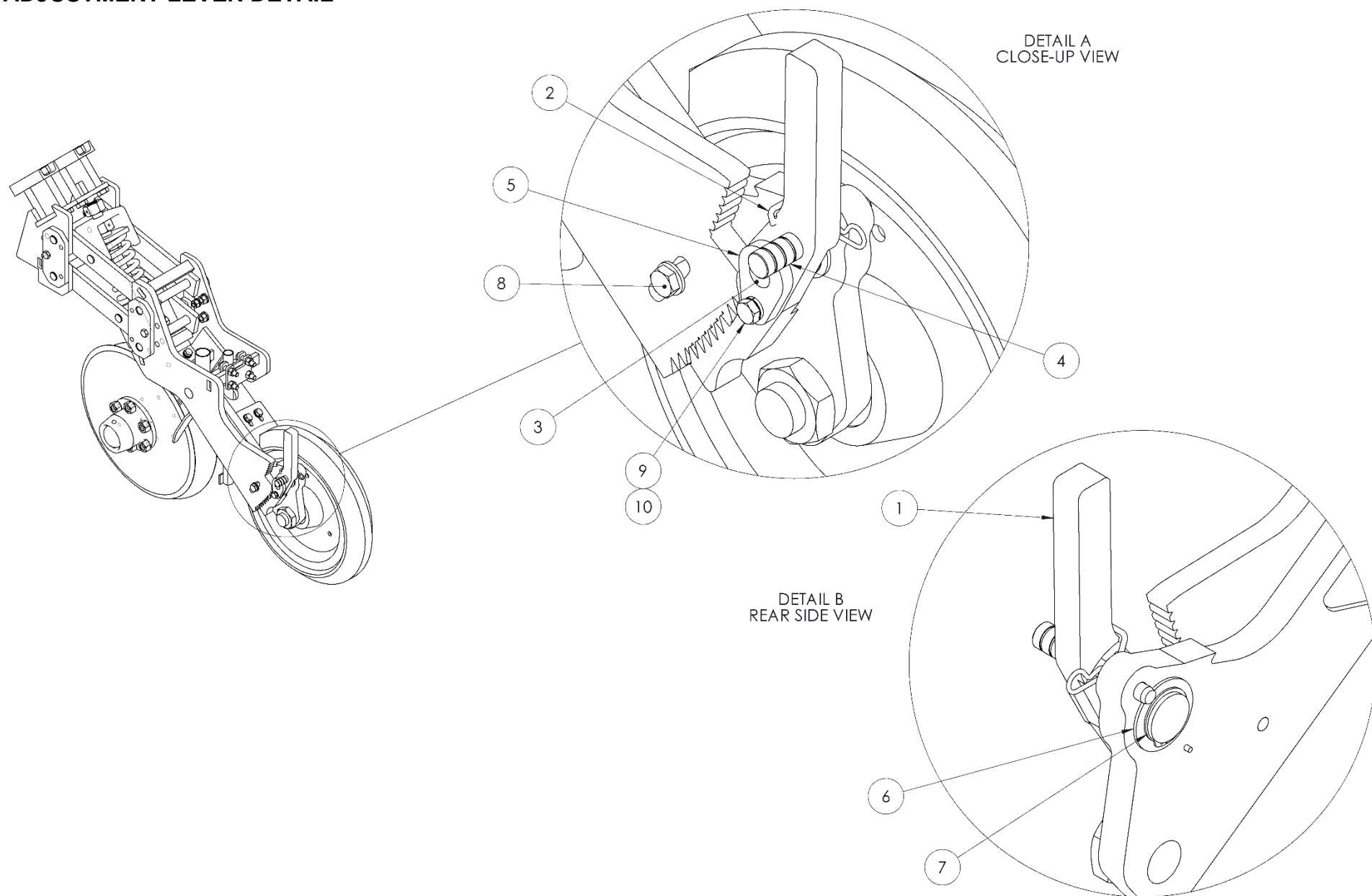
Torque: 8.5Nm with Loctite

Do Not Tighten - allow 1mm gap

Torque: 17Nm with Loctite

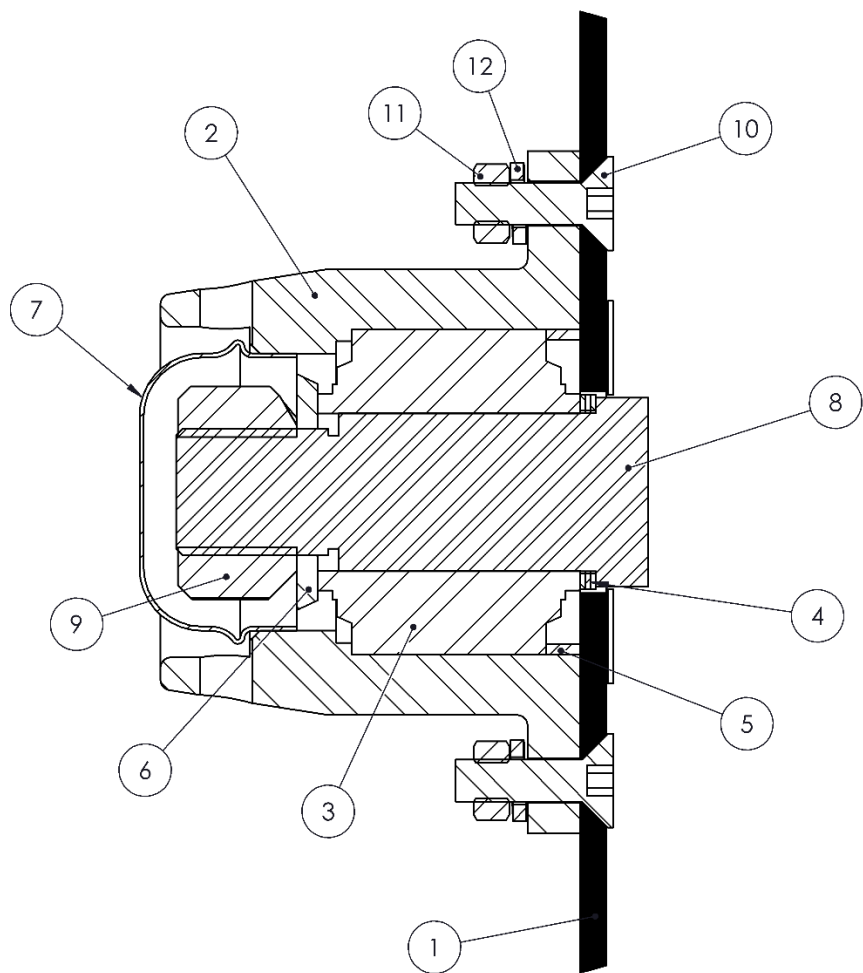
Torque: 17Nm with Loctite

ADJUSTMENT LEVER DETAIL

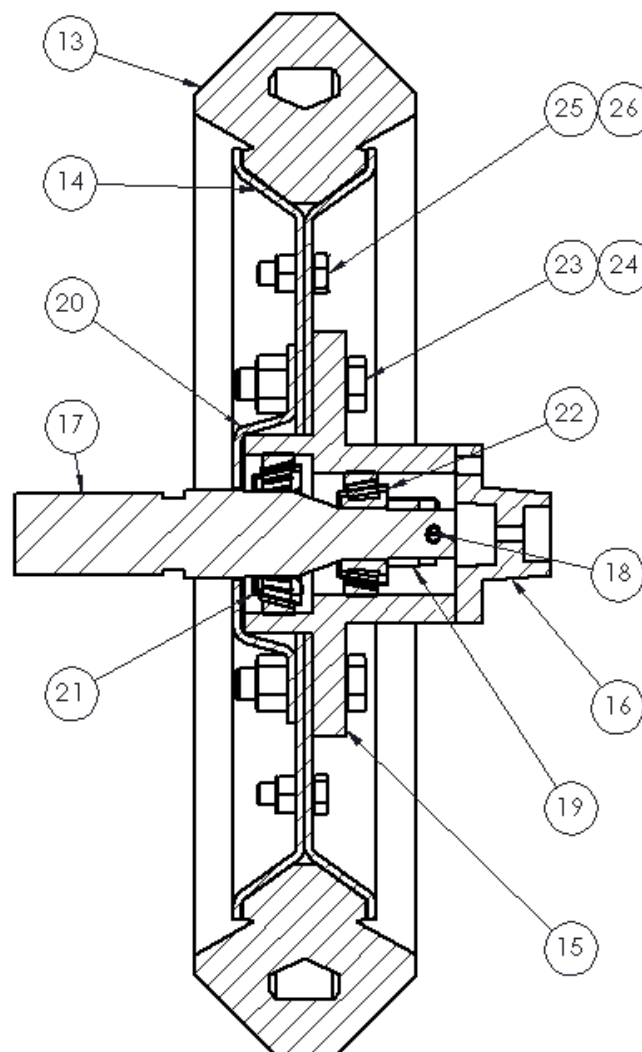


ITEM	PART No	DESCRIPTION	QTY	ITEM	PART No	DESCRIPTION	QTY
1	46609	HANDLE	1				
2	45312	SPRING	1				
3	45308	PIN, PIVOT	1				
4	45307	PIN, LOCKING	1				
5	46552	FIXING NUT	1				
6	45309	WASHER, FLAT - 30.5ID	1				
7	45310	CIRCLIP A30	1				
8	24214	SETSCREW,HEX M10x50 GR8.8 ZP	1				
9	19151	SCREW, HEX - M8 x 25 Gr4.6	1				
10	18465	WASHER, SPRING M8	1				

DOUBLE DISC OPENER DETAIL SECTION VIEWS



DISC/HUB ASSEMBLY
SECTION VIEW



PRESS WHEEL SECTION VIEW

DOUBLE DISC OPENER DETAIL SECTION VIEWS

ITEM	PART No	DESCRIPTION	QTY	NOTES	
1	45043	DISC, PLAIN 15" x 5mm	1	3 per disc (or as required to achieve 0.1-0.5mm disc gap)	
	45044	DISC, SCALLOPED 15" x 5mm	1		
2	46551	HUB, DISC	1		
3	43026	BEARING, DOUBLE RACE	1		
4	43030	SHIM	3		
5	43028	RING, SPACER	1		
6	18935	WASHER - STUB AXLE	1		
7	10100N	CAP, DUST 52.9mm WHEEL HUB	1		
8	43014	AXLE, STUB - DISC	1		
9	936-708	NUT, CONELOCK M24	1		
10	44995	M8 x 30 CSK	6		Torque: 30-35Nm with Loctite on thread
11	18464	NUT, HEX - M8	6		
12	18465	WASHER, SPRING M8	6		
13	49685	TYRE	1		
14	49686	RIM, HALF	2		
15	49687	HUB	1		
16	49688	CAP	1		
17	49689	SHAFT	1		
18	16859J1	PIN, COTTER 4x32	1		
19	49690	NUT, CASTLE	1		
20	49691	COVER	1		
21	49692	BEARING, LARGE	1		
22	49693	BEARING, SMALL	1		
23	18726	SCREW, M12 x 40, Gr8.8	5		
24	38533	NUT, NYLOC - M12	5		
25	33259	BOLT, HEX - M8 x 20	5		
26	34095	NUT, NYLOC - M8	5		
	43272	DISC HUB ASSEMBLY - PLAIN (ITEMS 1-12, NOTE: ITEM 1 43034)			
	43273	DISC HUB ASSEMBLY - SCALLOPED (ITEMS 1-12, NOTE: ITEM 1 43147)			
	49694	PRESS WHEEL ASSEMBLY (ITEMS 13-26)			

