



*FINEST IN THE FIELD*

# **JOHN SHEARER**

## ***Double Disc Opener***

**Operators  
Manual  
137J1**





# SAFETY



## **SAFETY FIRST**

DO NOT PUT YOUR FINGERS NEAR AN OPENER WHILE IN OPERATION.

BEWARE OF SHARP EDGES ON DISCS

NEVER STAND DIRECTLY IN THE PATH OF A LOADED SPRING.



CUSTOMER'S WARRANTY REGISTRATION CARD  
(Please retain for your records)

JOHN SHEARER LIMITED

IMPLEMENT TYPE: SERIAL No.  
SELLING DEALER: DATE PURCHASED:

PLEASE READ OPERATOR'S MANUAL TO ENSURE CORRECT APPLICATION, OPERATION AND MAINTAINANCE FOR THIS MACHINE.

THANK YOU FOR BUYING JOHN SHEARER



WARRANTY REGISTRATION CARD

DEALER COPY

DEALER NAME: DEALER TOWN:

IMPLEMENT MODEL: SIZE:

PRODUCT No. (as per price book) SERIAL No.

DEALER'S PRE DELIVERY IMPLEMENT CHECK WHEN DONE SIGNATURE

PURCHASERS NAME (Full)

ADDRESS (Full)

DATE OF PURCHASE: IMP. RECEIVED IN GOOD ORDER & CONDITION

PURCHASER ACKNOWLEDGES THAT THE PURCHASERS ATTENTION HAS BEEN DRAWN TO THE TERMS AND CONDITIONS OF THE JOHN SHEARER LIMITED WARRANTY POLICY ENDORSED HERE-ON.

PURCHASERS SIGNATURE



WARRANTY REGISTRATION CARD

IMPORTANT:- TO ENSURE YOUR CLIENTS ARE COVERED UNDER WARRANTY YOU MUST FILL OUT THIS PORTION OF THE CARD AND RETURN WITHIN 7 DAYS TO JOHN SHEARER LIMITED P.O. BOX 32, WELLAND, S.A. 5007

JOHN SHEARER LIMITED AREA MANAGER:

DEALER'S NAME: DEALER TOWN:

DEALER A/C No.:

IMPLEMENT MODEL: SIZE:

PRODUCT No. (as per price book) SERIAL No.

DEALER'S PRE DELIVERY IMPLEMENT CHECK WHEN DONE SIGNATURE

PURCHASERS NAME (Full)

ADDRESS (Full)

DATE OF PURCHASE: IMP. RECEIVED IN GOOD ORDER & CONDITION

PURCHASER ACKNOWLEDGES THAT THE PURCHASERS ATTENTION HAS BEEN DRAWN TO THE TERMS AND CONDITIONS OF THE JOHN SHEARER LIMITED WARRANTY POLICY ENDORSED HERE-ON.

PURCHASERS SIGNATURE



CUSTOMER'S MACHINERY REGISTER

We ask for your assistance in registering your holdings of equipment. This information can assist us greatly in after sales service, development of new products and customer awareness of Shearer products.

1. Name: Address: State: Postcode:

2. Type of purchaser (please tick) Owner / Manager Share Farmer Contractor

3. Major activities (please number in order of importance) Sheep and cereal grain Vegetables Sugar Sheep only Poultry Tobacco Cereal Grain Only Pigs Oilseeds Meat Cattle Vineyards Others (please list) Milk Cattle Fruit

4. What is the size of your holding (hectares)? What is the total area of your crop (hectares)? What is your area under cereal crop (hectares)?

5. In what town is your associated Shearer dealer? (i.e. either the dealer with whom you normally trade or the one who is closest)

6. What John Shearer machines do you currently have on your property?

Table with 5 columns: Serial No., Implement type, Size, Date Delivered, Comments. Includes a table header and several rows of dotted lines for data entry.

Thank you for your assistance; please feel free to use the back of this form to make any comments you wish.



## PRE-DELIVERY CHECK

1. On delivery of DOUBLE DISC OPENER/S ensure there are no shortages.
2. Check Implement equipment, to ensure as ordered.
3. Check for trans-shipping damage.
4. Check and tighten bolts and nuts
5. Ensure that equipment is fully assembled and operating correctly.
6. Demonstrate and explain operation to the client.
7. Explain terms and conditions of Warranty to client



Congratulations on the purchase of your new JOHN SHEARER LIMITED implement. You have just joined the growing number of John Shearer customers and we trust that your implement will give you many years of satisfaction. The following information contained in this manual is provided with regards to your implement's operation, maintenance and warranty; however, should you require further assistance, contact your registered John Shearer Dealer.

### WARRANTY POLICY

JOHN SHEARER LIMITED (JSL) warrants to purchaser that in normal use if any part of goods manufactured by JSL is proved to be defective material such part will be replaced or repaired by JSL if returned to Dealer at cost of customer within 12 months of delivery of goods, but such warranty shall to the extent permissible by law cease to apply forthwith if goods are misused or used contrary to recommendations of JSL and/or Dealer or if any unauthorised alterations, modifications or substitution of any part of goods is made or there is any breach by customer of the terms and conditions.

Customer agrees that JSL shall not be liable for any claim for damages due to loss of time in use of goods or loss of profits due to defective goods or for any other consequential damages whatsoever except to the extent that such exclusion of liability is prohibited by law.

All failures must be reported immediately by the purchaser to the Dealer (or in the event of the Dealer ceasing to hold the JSL franchise, then to the Dealer nominated by John Shearer Limited).

The only parts which would be replaced or repaired under warranty are those which are proven to be of defective materials by persons in authority in the JSL Field Service Department.

It is the policy of JSL to continually strive to improve their products whenever possible. Therefore, JSL reserves the right at all times to modify it's products or parts without notification and undertakes no liability to modify products sold, to conform with any such modifications.

Travelling and kilometre charges are not accepted by JSL as JSL has no control where equipment is sold.

Nothing in this warranty policy and instructions shall purport to exclude or limit any liability the exclusion or limitation of which is prohibited or rendered void by the Trade Practices Act 1974 as amended or any other Federal or applicable State Legislation.

All pre-delivery checks must be done by the Dealer and signed when completed on the Warranty Registration Card.

-----

**FREIGHT:** The JSL policy does not extend to cover freight charges.

**SERVICE & MAINTENANCE:** It is the responsibility of the owner to read the Operator's Manual and to maintain and operate the implement in a safe and correct manner within the manufacturer's specified capacity and operating limitations. Using the implement for purposes other than those for which it is designed voids all warranty.

Regular service to your implement can save costly repairs and save valuable time lost because of breakdown.

Resultant damage or failures originating from neglect of machine is not covered under warranty. For your spare part requirements contact your John Shearer Dealer.

## OPERATING INSTRUCTIONS

### DOWN PRESSURE

For best results, set the spring pressure only enough to ensure penetration. Spring pressure for use in soft ground should be much lower than for hard ground.

### TURNING

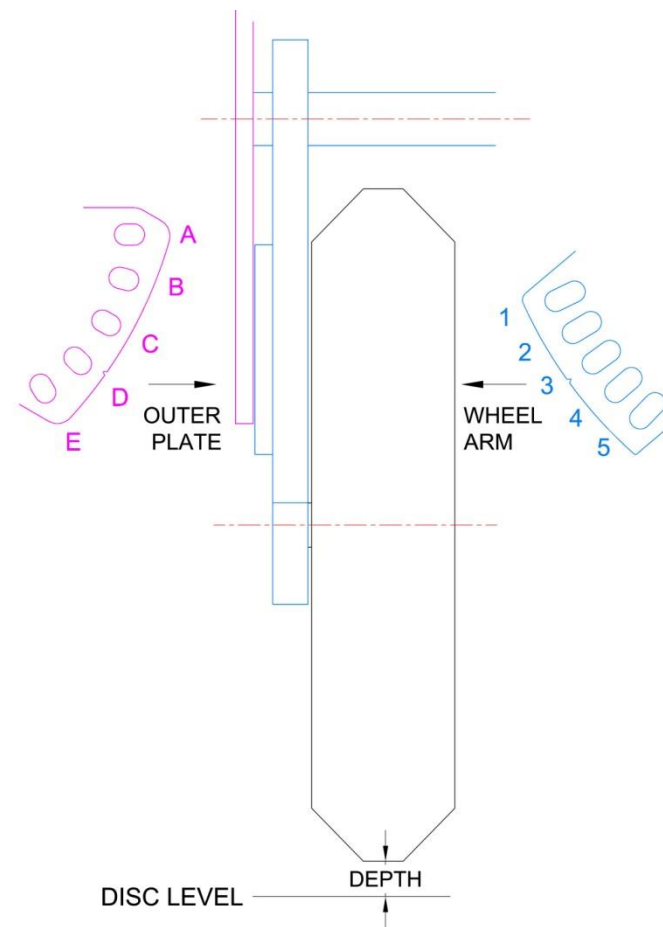
Lift the disc clear of the ground when turning to avoid damage.

### DEPTH

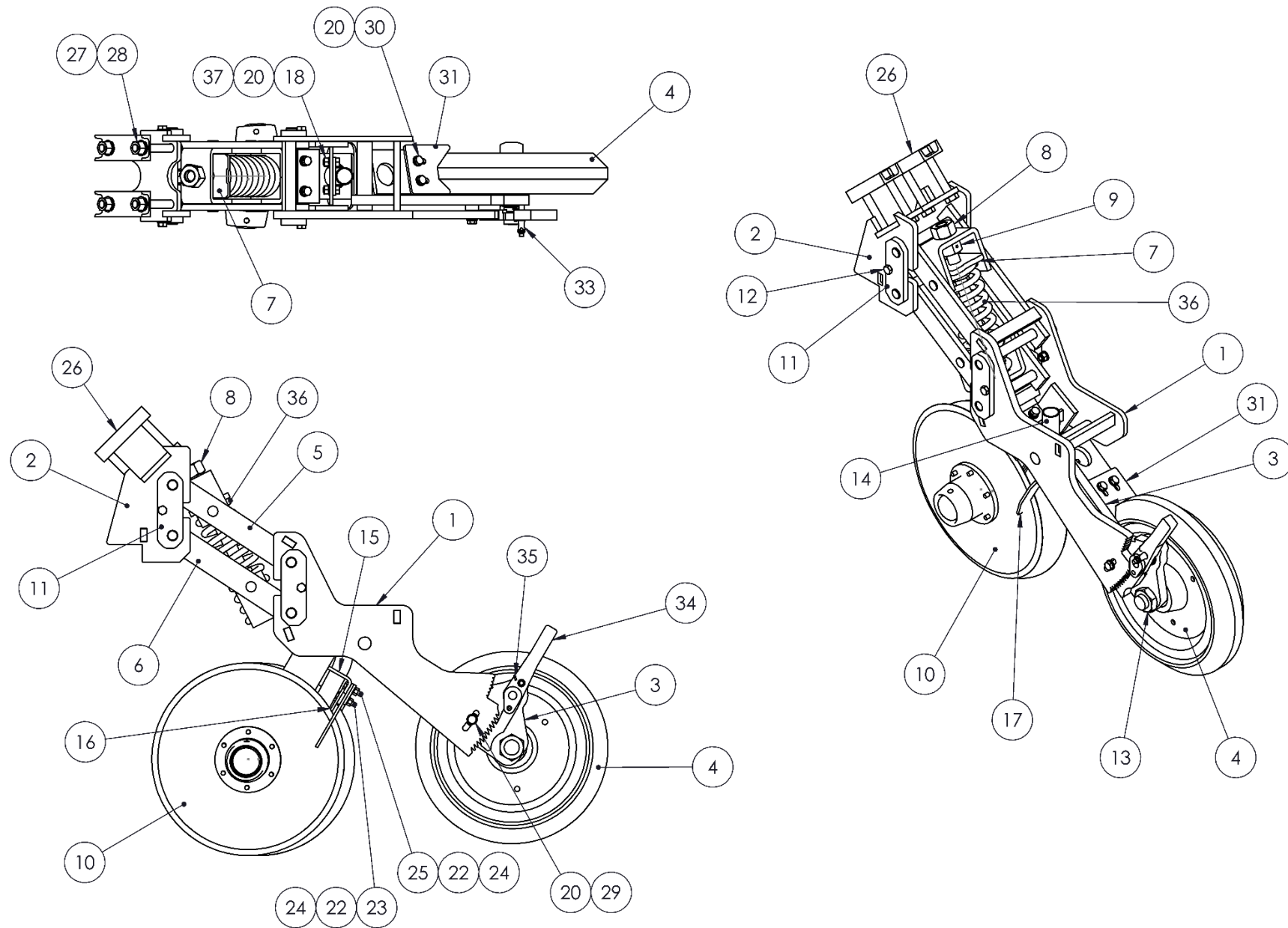
Use the chart below as a guide to which slot to use to achieve a certain depth. Note that it is only a guide as surface hardness will also affect the actual depth of penetration. Check you are achieving the correct depth when sowing commences by sowing a small amount (about 10m) and measuring the seed depth.

		OUTER PLATE				
		A	B	C	D	E
WHEEL ARM	1	44	13	-17	-45	-67
	2	71	39	6	-24	-49
	3	100	66	31	-1	-28
	4	129	94	58	24	-6
	5	160	123	86	50	18

The depth of the wheel relative to the disc (in mm) is given in the table above. The 'ABCDE' and '12345' settings relate to the slots on the outer plate and wheel arm as shown on the diagram to the right. Put the pin in the appropriate slots to achieve the desired depth setting. Note the dimension may be approximate depending on the exact condition of the tyre, so always check the depth is correct before sowing.



### DOUBLE DISC OPENER ASSEMBLY - SPRING

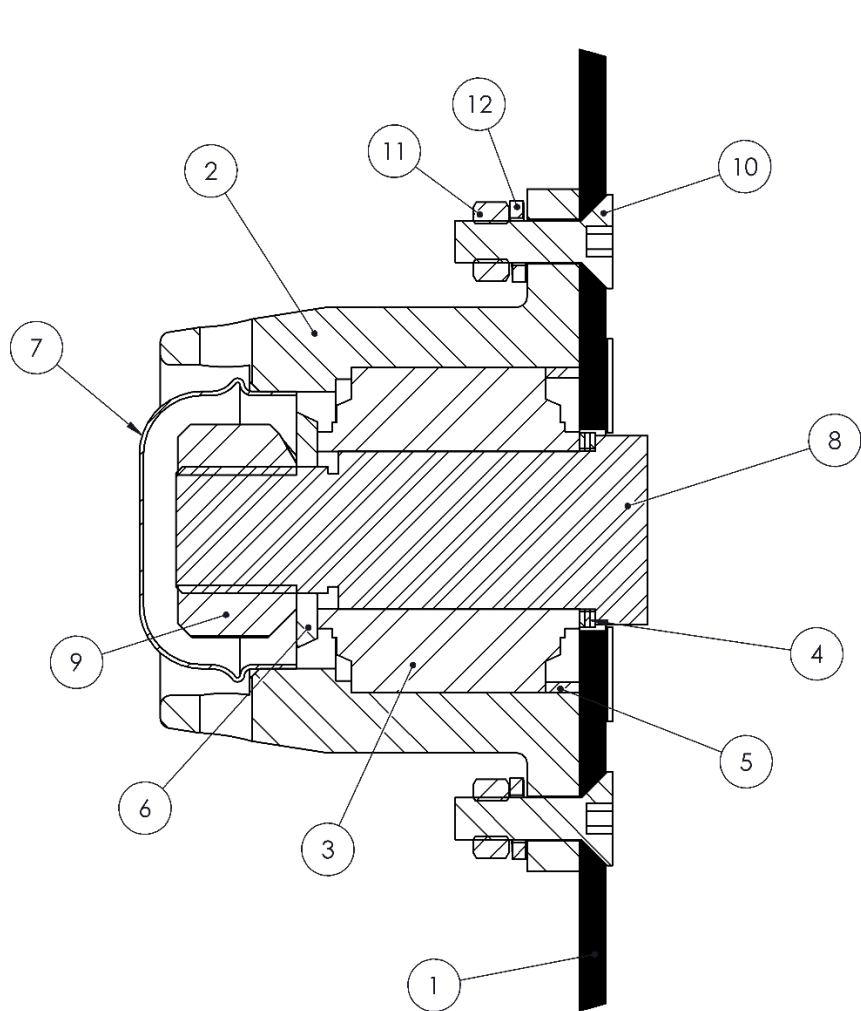




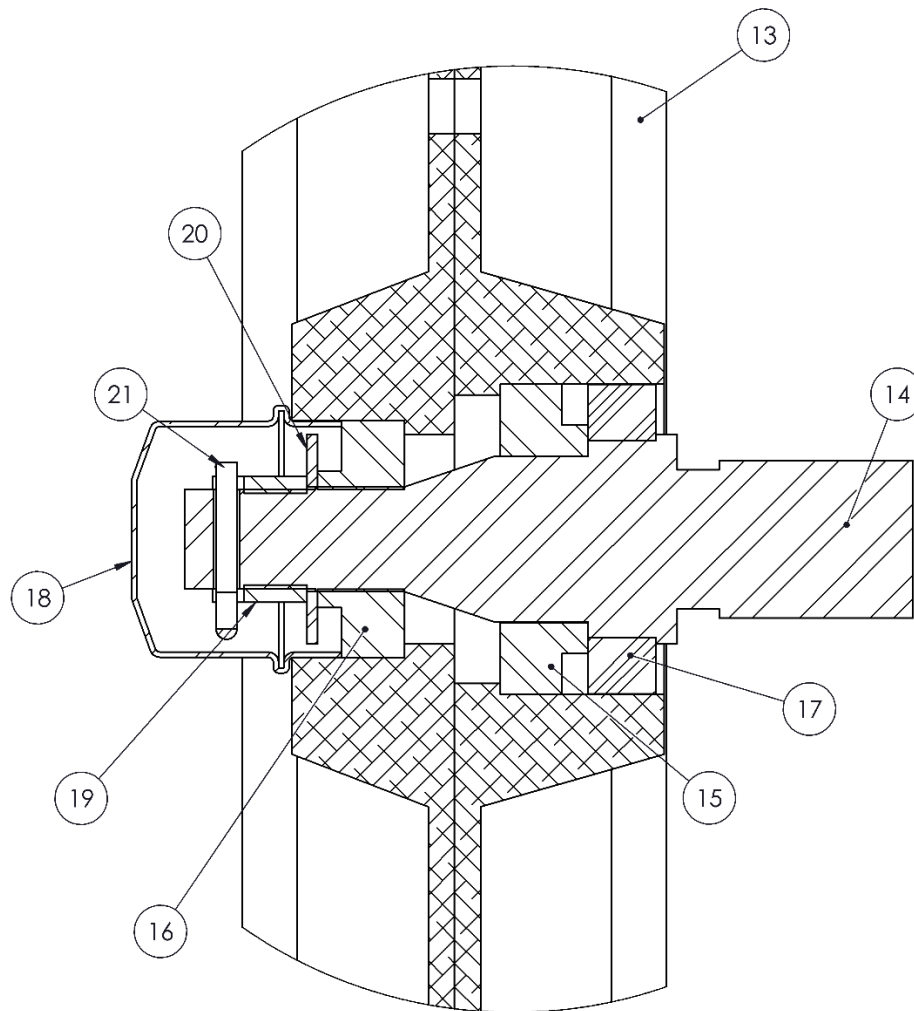
**DOUBLE DISC OPENER ASSEMBLY - SPRING**

ITEM	PART No	DESCRIPTION	QTY	ITEM	PART No	DESCRIPTION	QTY																														
1	43021	WHEEL BRACKET ASSEMBLY	1	36	37384	SPRING, 12mm	1																														
2	43271A	BEAM BRACKET ASSEMBLY - DIAMOND	1	37	18520	HEX, BOLT - M10 x 25	2																														
	43271B	BEAM BRACKET ASSEMBLY - SQUARE	1	<table border="1"> <thead> <tr> <th>PART No</th> <th>DESCRIPTION</th> </tr> </thead> <tbody> <tr> <td colspan="2" style="text-align: center;"><b>DOUBLE DISC OPENER COMPLETE ASSEMBLIES</b></td> </tr> <tr> <td>43065</td> <td>Spring, Diamond Mount, Plain Disc, Single Shoot.</td> </tr> <tr> <td>43132</td> <td>Spring, Square Mount, Plain Disc, Single Shoot</td> </tr> <tr> <td>43133</td> <td>Spring, Diamond Mount, Plain/Scalloped Disc, Single Shoot.</td> </tr> <tr> <td>43134</td> <td>Spring, Square Mount, Plain/Scalloped Disc, Single Shoot.</td> </tr> <tr> <td colspan="2">Torque: 17Nm with Loctite</td> </tr> <tr> <td colspan="2">Allow 1-2mm gap to disc/s</td> </tr> <tr> <td colspan="2">Allow 1-2mm gap to disc/s</td> </tr> <tr> <td colspan="2">Torque: 8.5Nm with Loctite (note: do not tighten with item 32)</td> </tr> <tr> <td colspan="2">Torque: 8.5Nm with Loctite</td> </tr> <tr> <td colspan="2">Torque: 8.5Nm with Loctite</td> </tr> <tr> <td colspan="2">Do Not Tighten - allow 1mm gap</td> </tr> <tr> <td colspan="2">Torque: 17Nm with Loctite</td> </tr> <tr> <td colspan="2">Torque: 17Nm with Loctite</td> </tr> </tbody> </table>				PART No	DESCRIPTION	<b>DOUBLE DISC OPENER COMPLETE ASSEMBLIES</b>		43065	Spring, Diamond Mount, Plain Disc, Single Shoot.	43132	Spring, Square Mount, Plain Disc, Single Shoot	43133	Spring, Diamond Mount, Plain/Scalloped Disc, Single Shoot.	43134	Spring, Square Mount, Plain/Scalloped Disc, Single Shoot.	Torque: 17Nm with Loctite		Allow 1-2mm gap to disc/s		Allow 1-2mm gap to disc/s		Torque: 8.5Nm with Loctite (note: do not tighten with item 32)		Torque: 8.5Nm with Loctite		Torque: 8.5Nm with Loctite		Do Not Tighten - allow 1mm gap		Torque: 17Nm with Loctite		Torque: 17Nm with Loctite	
PART No	DESCRIPTION																																				
<b>DOUBLE DISC OPENER COMPLETE ASSEMBLIES</b>																																					
43065	Spring, Diamond Mount, Plain Disc, Single Shoot.																																				
43132	Spring, Square Mount, Plain Disc, Single Shoot																																				
43133	Spring, Diamond Mount, Plain/Scalloped Disc, Single Shoot.																																				
43134	Spring, Square Mount, Plain/Scalloped Disc, Single Shoot.																																				
Torque: 17Nm with Loctite																																					
Allow 1-2mm gap to disc/s																																					
Allow 1-2mm gap to disc/s																																					
Torque: 8.5Nm with Loctite (note: do not tighten with item 32)																																					
Torque: 8.5Nm with Loctite																																					
Torque: 8.5Nm with Loctite																																					
Do Not Tighten - allow 1mm gap																																					
Torque: 17Nm with Loctite																																					
Torque: 17Nm with Loctite																																					
3	43047	WHEEL ARM ASSEMBLY	1																																		
4	43051	PRESS WHEEL ASSEMBLY	1																																		
5	43013	ARM ASSY, UPPER	1																																		
6	43068	ARM ASSY, LOWER	1																																		
7	43023	UPPER SEAT ASSY	1																																		
8	43046	BOLT, TENSION	1																																		
9	43274	NUT, DRILLED - M24	1																																		
10	43272	DISC/HUB ASSEMBLY - PLAIN	2																																		
	43273	DISC/HUB ASSEMBLY - SCALLOPED	2																																		
11	43024	PLATE, KEEPER	4																																		
12	20679	AS 1111.2 - M10 x 35-NN	4																																		
13	17261J1	AS 1112.4 AB- M30-N	1																																		
14	43669	SEED TUBE ASSEMBLY	1																																		
15	43661	SCRAPER FRAME	1																																		
16	44432	SCRAPER, INTERNAL	1																																		
17	44431A	SCRAPER, EXTERNAL	2																																		
18	31993	AS 1112.2 S2- M10-W-N NYLOC	6																																		
19	18613	HEX, BOLT - M10 x 20	2																																		
20	FBW4	AS 1237.1 N - 10	11																																		
21	17776J1	WASHER, SPRING M10	2																																		
22	34095	AS 1112.2 S2- M8-D-C NYLOC	4																																		
23		AS-NZS 1390 S - M8 x 40-N Cup Head	2																																		
24	FBW3	AS 1237.1 N - 8	4																																		
25	18437	AS 1110.2 - M8 x 35 -C	2																																		
26	43326	CLAMP	2																																		
27	FBW8	WASHER, FLAT M16	4																																		
28	28912	NUT, HEX - M16 NYLOC	4																																		
29	24214	AS 1110.1 - M10 x 50-N	1																																		
30	20800	AS 1110.2 - M10 x 30 -C	2																																		
31	43315	SCRAPER, PRESS WHEEL	1																																		
32	43929	PLATE, MOUNT	1																																		
33	45307	PIN, BALL LOCK (PURCH)	1																																		
34	45306	ARM	1																																		
35	45312	SPRING	1																																		

### DOUBLE DISC OPENER DETAIL SECTION VIEWS



DISC/HUB ASSEMBLY  
SECTION VIEW



PRESS WHEEL ASSEMBLY  
SECTION VIEW

**DOUBLE DISC OPENER DETAIL SECTION VIEWS**

ITEM	PART No	DESCRIPTION	QTY	NOTES
1	45043	DISC, PLAIN 15" x 5mm	1	3 per disc (or as required to achieve 0.1-0.5mm disc gap)
	45044	DISC, SCALLOPED 15" x 5mm	1	
2	46551	HUB, DISC	1	
3	43026	BEARING, DOUBLE RACE	1	
4	43030	SHIM	3	
5	43028	RING, SPACER	1	
6	18935	WASHER - STUB AXLE	1	
7	10100N	CAP, DUST 52.9mm WHEEL HUB	1	
8	43014	AXLE, STUB - DISC	1	
9	936-708	NUT, CONELOCK M24	1	
10	44995	M8 x 30 CSK	6	
11	18464	NUT, HEX - M8	6	
12	18465	WASHER, SPRING M8	6	Torque: 30-35Nm with Loctite on thread
13	43060	WHEEL/TYRE ASSEMBLY	1	Replacement Tyre P/N: 43327
14	43050	AXLE, STUB	1	
15	SR552	BEARING	1	
16	43052	BEARING	1	
17	43053	SEAL, TRIPLE LIP	1	
18	43057	CAP, DUST	1	
19	43058	NUT, CASTLE	1	
20	43059	WASHER	1	
21	16859J1	PIN, COTTER 4x32	1	
	43272	DISC HUB ASSEMBLY - PLAIN (ITEMS 1-11, NOTE: ITEM 1 43034)		
	43273	DISC HUB ASSEMBLY - SCALLOPED (ITEMS 1-11, NOTE: ITEM 1 43147)		
	43051	PRESS WHEEL ASSEMBLY (ITEMS 12-20)		

