



FINEST IN THE FIELD

JOHN SHEARER

Vineyard Seeder

**Operators
Manual
133J2**



SAFETY

SAFETY FIRST

DO NOT OPERATE THE IMPLEMENT WITH CHAIN DRIVE GUARDS REMOVED

DO NOT ATTEMPT ANY WORK ON THE IMPLEMENT WHILE THE IMPLEMENT IS IN MOTION. (I.E. CLEANING OF BOXES OR LUBRICATION OF DRIVES ETC.)

PRIOR TO WORKING UNDERNEATH THE IMPLEMENT (E.G. CHANGING DISCS ETC.) ALWAYS CHECK THAT THE IMPLEMENT IS ADEQUATELY SUPPORTED ON BLOCKS.



CUSTOMER'S WARRANTY REGISTRATION CARD

(Please retain for your records)

JOHN SHEARER LIMITED

IMPLEMENT TYPE: SERIAL No.

SELLING DEALER: DATE PURCHASED:

PLEASE READ OPERATOR'S MANUAL TO ENSURE CORRECT APPLICATION, OPERATION AND MAINTAINANCE FOR THIS MACHINE.

THANK YOU FOR BUYING JOHN SHEARER



WARRANTY REGISTRATION CARD

DEALER COPY

DEALER NAME:

DEALER TOWN:

IMPLEMENT MODEL:

SIZE:

PRODUCT No. (as per price book)

SERIAL No.

DEALER'S PRE DELIVERY IMPLEMENT CHECK

WHEN DONE SIGNATURE

PURCHASERS NAME (Full)

ADDRESS (Full)

DATE OF PURCHASE:

IMP. RECEIVED IN GOOD ORDER & CONDITION

PURCHASER ACKNOWLEDGES THAT THE PURCHASERS ATTENTION HAS BEEN DRAWN TO THE TERMS AND CONDITIONS OF THE JOHN SHEARER LIMITED WARRANTY POLICY ENDORSED HERE-ON.

PURCHASERS SIGNATURE.....



WARRANTY REGISTRATION CARD

IMPORTANT:- TO ENSURE YOUR CLIENTS ARE COVERED UNDER WARRANTY YOU MUST FILL OUT THIS PORTION OF THE CARD AND RETURN WITHIN 7 DAYS TO JOHN SHEARER LIMITED
P.O. BOX 32, WELLAND, S.A. 5007

JOHN SHEARER LIMITED AREA MANAGER:

DEALER'S NAME:

DEALER TOWN:

DEALER A/C No.:

IMPLEMENT MODEL:

SIZE:

PRODUCT No. (as per price book)

SERIAL No.

DEALER'S PRE DELIVERY IMPLEMENT CHECK

WHEN DONE SIGNATURE

PURCHASERS NAME (Full)

ADDRESS (Full)

DATE OF PURCHASE:

IMP. RECEIVED IN GOOD ORDER & CONDITION

PURCHASER ACKNOWLEDGES THAT THE PURCHASERS ATTENTION HAS BEEN DRAWN TO THE TERMS AND CONDITIONS OF THE JOHN SHEARER LIMITED WARRANTY POLICY ENDORSED HERE-ON.

PURCHASERS SIGNATURE.....



CUSTOMER'S MACHINERY REGISTER

We ask for your assistance in registering your holdings of equipment. This information can assist us greatly in after sales service, development of new products and customer awareness of Shearer products.

- Name:.....
Address:.....
State:.....Postcode:.....
- Type of purchaser (please tick) ☐ Owner / Manager ☐ Share Farmer ☐ Contractor
- Major activities (please number in order of importance)
☐ Sheep and cereal grain ☐ Vegetables ☐ Sugar
☐ Sheep only ☐ Poultry ☐ Tobacco
☐ Cereal Grain Only ☐ Pigs ☐ Oilseeds
☐ Meat Cattle ☐ Vineyards ☐ Others (please list)
☐ Milk Cattle ☐ Fruit ☐
- What is the size of your holding (hectares)?
What is the total area of your crop (hectares)?
What is your area under cereal crop (hectares)?
- In what town is your associated Shearer dealer? (i.e. either the dealer with whom you normally trade or the one who is closest)
- What John Shearer machines do you currently have on your property?

Serial No.	Implement type	Size	Date Delivered	Comments
...../...../.....				
...../...../.....				
...../...../.....				
...../...../.....				
...../...../.....				
...../...../.....				

Thank you for your assistance; please feel free to use the back of this form to make any comments you wish.

PRE-DELIVERY CHECK

1. On delivery of VINEYARD SEEDER ensure there are no shortages.
2. Check Implement equipment, to ensure as ordered.
3. Check for trans-shipping damage.
4. Refer to lubrication section, page 8, for greasing and routine check points.
5. Check and tighten bolts and nuts, (including wheel nuts).
6. Ensure that implement is fully assembled and operating correctly.
7. Demonstrate and explain operation to the client.
8. Explain terms and conditions of Warranty to client.



Congratulations on the purchase of your new JOHN SHEARER LIMITED implement. You have just joined the growing number of John Shearer customers and we trust that your implement will give you many years of satisfaction. The following information contained in this manual is provided with regards to your implement's operation, maintenance and warranty; however, should you require further assistance, contact your registered John Shearer Dealer.

WARRANTY POLICY

JOHN SHEARER LIMITED (JSL) warrants to purchaser that in normal use if any part of goods manufactured by JSL is proved to be defective material such part will be replaced or repaired by JSL if returned to Dealer at cost of customer within 12 months of delivery of goods, but such warranty shall to the extent permissible by law cease to apply forthwith if goods are misused or used contrary to recommendations of JSL and/or Dealer or if any unauthorised alterations, modifications or substitution of any part of goods is made or there is any breach by customer of the terms and conditions.

Customer agrees that JSL shall not be liable for any claim for damages due to loss of time in use of goods or loss of profits due to defective goods or for any other consequential damages whatsoever except to the extent that such exclusion of liability is prohibited by law.

All failures must be reported immediately by the purchaser to the Dealer (or in the event of the Dealer ceasing to hold the JSL franchise, then to the Dealer nominated by John Shearer Limited).

The only parts which would be replaced or repaired under warranty are those which are proven to be of defective materials by persons in authority in the JSL Field Service Department.

It is the policy of JSL to continually strive to improve their products whenever possible. Therefore, JSL reserves the right at all times to modify it's products or parts without notification and undertakes no liability to modify products sold, to conform with any such modifications.

Travelling and kilometre charges are not accepted by JSL as JSL has no control where equipment is sold.

Nothing in this warranty policy and instructions shall purport to exclude or limit any liability the exclusion or limitation of which is prohibited or rendered void by the Trade Practices Act 1974 as amended or any other Federal or applicable State Legislation.

All pre-delivery checks must be done by the Dealer and signed when completed on the Warranty Registration Card.

FREIGHT: The JSL policy does not extend to cover freight charges.

SERVICE & MAINTENANCE: It is the responsibility of the owner to read the Operator's Manual and to maintain and operate the implement in a safe and correct manner within the manufacturer's specified capacity and operating limitations. Using the implement for purposes other than those for which it is designed voids all warranty.

Regular service to your implement can save costly repairs and save valuable time lost because of breakdown.

Resultant damage or failures originating from neglect of machine is not covered under warranty. For your spare part requirements contact your John Shearer Dealer.



JOHN SHEARER LIMITED

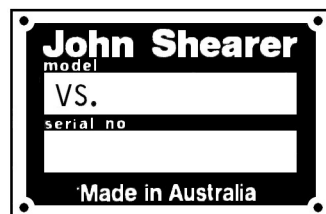
ESTABLISHED 1877
INCORPORATED IN SOUTH AUSTRALIA

HEAD OFFICE & FACTORY
BOX 32 WELLAND
SOUTH AUSTRALIA 5007

TELEPHONE +61 8 8268 9555
STREET LOCATION SHARE STREET, KILKENNY
FAX No. +61 8 8268 1103 (SPARE PARTS)
Website: www.johnshearer.com.au
Spare parts email: spares@johnshearer.com.au

WHEN ORDERING SPARE PARTS PLEASE STATE:

1. MODEL, SERIAL NUMBER & SIZE (OF THE MACH. / IMP.)
2. PART NUMBER AND DESCRIPTION (OF THE SPARE PART).
3. NUMBER OF PARTS REQUIRED.
4. FORWARDING INSTRUCTIONS.
5. CORRECT NAME & ADDRESS OF DESTINATION.



MODEL & SERIAL NUMBER PLATE
IS PLACED ON THE LEFT HAND FRONT OF
THE MAIN FRAME.

MADE & PRINTED IN AUSTRALIA BY JOHN SHEARER LIMITED.

M133J2 SEPT 2007

CONTENTS

PAGES	DESCRIPTION
4	SPECIFICATION
5-9	SETTING UP / OPERATING INSTRUCTIONS
8	LUBRICATION
9	TYRE PRESSURES
10	SOWING RATES
11	GRAIN AND FERTILISER CHART
12	DRIVE FACTOR CHART
13	G.S.B. SOWING CHART
14-15	GENERAL ARRANGEMENT
16-17	MAIN FRAME, BOX & PLATFORM
18-19	GRAIN & FERTILISER SHAFTS, GATES ETC.
20-21	DRIVES (PRIMARY)
22-23	DRIVES (SECONDARY)
24-25	GEARBOX
26-27	DRAWBARS, DISCS AND SCRAPERS ETC.
28-29	TYNE ASSEMBLY ETC. (TYNE DRILL ONLY)
30-31	GRASS SEED BOX (OPTIONAL)
32-33	SPRING TOOTH HARROWS (OPTIONAL)
34-35	TRANSFERS
36	FARMSCAN HECTAREMETER CALIBRATION

SPECIFICATIONS

No. OF SOWING ROWS 10

SOWING WIDTH: m 1.8
 (ft) (5'11")

SOWING SPACING: 180mm (7")

BOX CAPACITY:

Rear – seed - kg 160
 (lb) (352)

Front – fertilizer - kg 220
 (lb) (484)

VINEYARD SEEDER

Disc Diameter - 330mm (13")
Jump Height - 340mm (13 3/8")
Disc Spacing - 180mm (7")
Weight Empty (approx.)- 518kg (1140lb)

VINEYARD TYNE DRILL

Tyne type - "580" Spring release
Jump Height - 250mm (10")
Tyne breakaway force - 16mm diameter spring, adjustable to a
 maximum 740N (165lbf)
Tyne Spacing - 540mm (21 1/4") Along Rows
 180mm (7") overall
Weight Empty (approx.) - 670kg (1475lb)

DEPTH WHEELS: 185 x 14
 Max. working depth 100mm (4")
 Adjustable by screw adjustment.

SEED & FERTILISER DISTRIBUTORS:

Seed - Fluted roller with restrictor for small seeds,
 low rates

Fertilizer - Nylon peg tooth distributor roller.

Gates - Adjustable rubber in both compartments.

GEARBOX:

Fully enclosed 31 speed oil bath gearbox,
with external change gears, for both
compartments.

OPTIONAL EQUIPMENT: Spring Tooth Harrows

Broad Bean Rollers

Fertilizer screens

Grass Seed Box

Due to our policy of continuing research, these specifications are subject to change without prior notification.

SETTING UP / OPERATING INSTRUCTIONS

Congratulations on the purchase of your new VINEYARD SEEDER.

This manual has been prepared to assure the proper set up, operation and trouble free service.

After reading this manual, keep it in the carrier provided on the implement for quick and easy reference should any question arise concerning operation or service.

Your VINEYARD SEEDER is designed to give maximum service life, but a routine lubrication and maintenance schedule must be followed as shown on the lubrication chart (see page 8)

SETTING UP – LINKAGE IMPLEMENT

The following steps should be taken to achieve satisfactory operation of this implement.

IMPLEMENT LEVELLING “FRONT TO REAR”

Adjust top lift link length on tractor to level implement, “front to rear”. Set the Disc Drill with the grain and fertilizer box support “level” in the working position.

IMPLEMENT LEVELLING “SIDE TO SIDE”

Screw assemblies on both left and right hand sides of the implement are adjusted to level the implement, at working depth. Also adjust the tractor lower links so that discs enter the soil evenly.

DEPTH ADJUSTMENT

Set adjusting screws to the maximum working depth desired.



TURNING

Avoid turning sharply with discs in the ground. At corners, lift them out of the ground. The sowing of headlands will then eliminate oversowing on corners.

SOWING RATES

Select sowing rates as per the sowing chart.

N.B. This chart is to be used as a guide only.

Check sowing rate as follows:-

The sowing rate chart is based on an effective wheel rolling radius of 315mm. That is 2806 revolutions (10 row) of the drive correspond to 1 hectare.

CALIBRATION

Jack up the left hand drive wheel and rotating 56 times (10 row). Collect and weigh the delivered seed or fertilizer and multiply by 50. This will give the actual sowing rate for your particular seed.

GRAIN AND FERTILIZER BOX CAPACITIES

The Grain and Fertilizer box is fitted with distributors, which allow either grain or fertilizer in both compartments. The two compartments of the box are unequal in volume. This feature allows whichever material is being used in higher quantities to be placed in the larger (front) compartment. However it is recommended to fill the heavier material (usually fertilizer) into the front compartment, to improve stability.

The relative volumes are:-

FRONT COMPARTMENT = 55%, REAR COMPARTMENT = 45%

Where both compartments are being used for the same material, optimum use is made of the whole box capacity if the

sowing rates selected for each compartment are in the same ratio as the compartment volumes.

$$\text{i.e. } \frac{1.25}{1}$$

For example: If a sowing rate of 100 kg/ha is required, the sowing rates selected for the front compartment should be 55kg/ha and for the rear 45kg/ha. This will provide, as near as possible, simultaneous emptying of both compartments.

DISTRIBUTORS

The peg tooth distributor in the front compartment is suitable for both fertilizer and smaller grains, up to the size of peas and lupins.

The fluted distributor in the rear compartment is suitable for fertilizers and all grains including pasture and larger seeds. For low rates use the restrictor.

DO NOT USE THE RESTRICTOR WITH FERTILIZERS.

NOTE: For broad beans, a special distributor is available. (see item 10, page 19)

PENETRATION OF DISCS

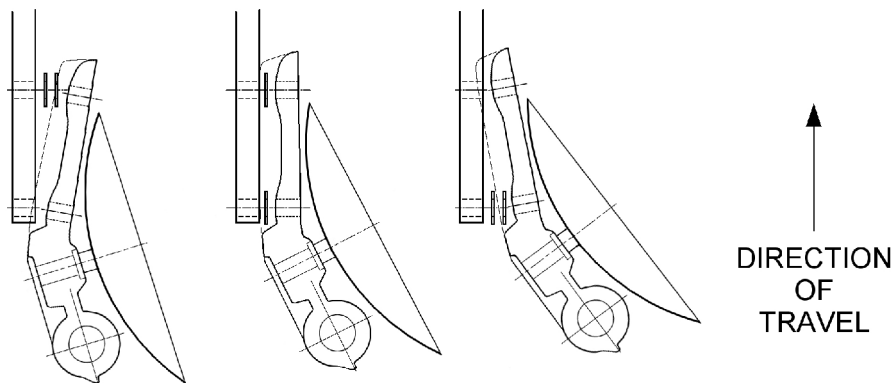
Where you are unable to gain enough penetration with the discs due to hard conditions, more pressure can be obtained by compressing the springs on the pressure rods, re-locating the washer and hair pin higher up the pressure rod in the holes provided.

BREAST SET ON DISCS

The set of the disc may be altered by fitting or removing breast adjustment spacers (item 15, page 26) between the drawbar and the drill boot.

Spacers fitted between the arm and the front hole of the disc boot gives a 50mm set to the disc and to the back hole gives a 70mm set. Spacers taken out all together give a 60mm set to

the disc. Increasing breast angle of disc aids trash or clod clearance, but reduces penetration. The breast cut of the discs is adjustable to vary the width of the sowing slot.



STAGGERING OF DISCS

Extensions are fitted between the drawbar and the boot on alternate discs, which stagger the discs, one forward and one behind to give better trash clearance.

BARFLOW HOSE AND RUBBER CUPS

Fit the hose by screwing it into the molded thread inside the cup, fit also two convolutions in to the drill boot. They are to be fitted so that the lip inside the boot holds the second convolution.

To fit, squeeze the end of the tube and insert in so far as three convolutions then manipulate back into the second convolution, kneading as required to remove kinks, stretching, also helps to settle the tube into correct position. If only one convolution is fitted it could pull out when strain is placed on it during working. Fit hose cup to the distributor with the straight side of the cup facing the front. Align cup by rotating tube in boot.

STORAGE

At seasons end, this implement should be stored away, jacked up and placed on blocks to take the weight off the tyres. It should be thoroughly cleaned, removing all traces of seed or fertilizer from compartments and distributors.

Fill gearbox with oil.

Remove chains, clean, lubricate and store in a clean, dry location.

Grease all bearings.

Touch up scratched or damaged paintwork.

FERTILIZER CORROSION DAMAGE

The hopper must be “COMPLETELY AND THOROUGHLY CLEANED OUT” after use, to help prevent corrosion. It is especially important that the hopper is not left overnight with any fertilizer remaining in it. Particular attention should be paid to keeping the area around the critical distributor/bearing/gate components free of fertilizer

This recommendation is applicable irrespective of the kind of fertilizer in use, but is more important with the higher analysis, high nitrogen, fertilizers.

SAFETY FIRST

DO NOT OPERATE THE IMPLEMENT WITH CHAIN DRIVE GUARDS REMOVED.

DO NOT ATTEMPT ANY WORK ON THE IMPLEMENT WHILE THE IMPLEMENT IS IN MOTION. (I.E. CLEANING OF BOXES OR LUBRICATION OF DRIVES ETC.).

PRIOR TO WORKING UNDERNEATH THE IMPLEMENT (E.G. CHANGING DISCS, ETC.) ALWAYS CHECK THAT THE IMPLEMENT IS ADEQUATELY SUPPORTED ON BLOCKS.

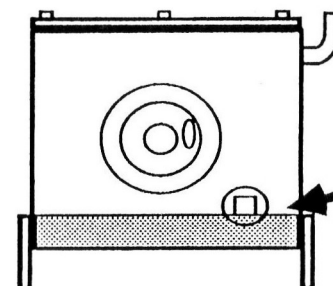
LUBRICATION

ITEM	INSTRUCTIONS
WHEEL BEARINGS	GREASE ONCE PER WORKING MONTH
DISTRIBUTOR BEARINGS	GREASE ALL DISTRIBUTOR BEARINGS WEEKLY
DRIVE CHAINS	ANNUAL STORAGE MAINTENANCE
GEARBOX OIL	AS PER THIS PAGE – CHECK ANNUALLY
GREASE NIPPLES	ALL GREASE NIPPLES SHOULD BE LUBRICATED PRIOR TO STORAGE OF THE IMPLEMENT AT END OF EACH WORKING PERIOD.

ROUTINE CHECKS

- CHECK TYRE PRESSURES (REF, PAGE 9)
- CHECK ADJUSTMENT OF ALL DRIVE CHAINS.
- GENERALLY INSPECT ALL BOLTS AND NUTS FOR TIGHTNESS

DO NOT LEAVE FERTILIZER IN THE IMPLEMENT OVERNIGHT.
(PARTICULARLY HYGROSCOPIC FERTILIZER, WHICH WILL
TAKE UP MOISTURE AND HARDEN)



IMPORTANT
CHECK GEARBOX OIL LEVEL
ON DELIVERY.
FILL TO OIL LEVEL PLUG
USING SAE 120.

TYRE PRESSURES

TYRE PRESSURES ARE IMPORTANT	
<p><u>OVER INFLATION</u> will impair flotation - Increasing sowing depth variations as ground conditions vary. <u>UNDER INFLATION</u> can result in tyre failures.</p>	

TYRE SIZE	10 ROW
185 x 14 TYRE PRESSURE kPa	124
psi	18

SPEED LIMIT 10 km/h (SOWING)

SOWING RATES

Select sowing rates as per chart on the left hand side of the implement. N.B. This chart is to be used as a guide only.

Check sowing rates as follows:

Example: For tyre size 185 x 14 the sowing rate chart is based on an effective wheel rolling radius of 315mm. For a 10 row drill approximately 2806 revolutions of the drive wheel correspond to 1 hectare.

You can check rates by following the instructions to the right:

1. Lower the machine to engage drive clutch, jack up the left hand drive wheel.
2. Rotate wheel
56 times – 10 row
3. Collect and weigh the delivered seed or fertilizer and multiply by 50. This will give the actual sowing rate per hectare for that particular product.

See table below for different configurations of:
tyre/machine size/cranking revolution

TYRE	LOADED RADIUS (mm)	WHEEL REVS. /Ha
10 ROW DRILL		
185 x 14	315	2806



JANUARY 1988

GRAIN & FERTILIZER CHART Sowing at 180mm spacing. P/No. 33759

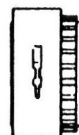
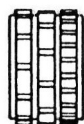
QUANTITIES SHOWN ARE IN KG/HA AND ARE APPROXIMATE ONLY.
CHECK IN FIELD WHEN SOWING COMMENCES

GEARBOX SETTING		F6	F5	F4	E6	E5	F3	D6	E4	D5	F2	C6	E3	D4	C5	B6	A6	A5	B4	C3	D2	A4	E1	B3	C2	A3	D1	B2	A2	C1	B1	A1	GATE SET.
GRAN. SUPER PHOS.	NO	52	60	71	73	84	87	93	99	107	111	113	120	126	131	134	154	177	181	188	197	209	214	221	240	255	274	283	326	333	393	453	2
HIGH ANAL. FERT.	NO	36	42	49	51	58	60	65	69	74	77	79	83	88	91	93	107	123	126	131	137	145	149	154	167	177	190	197	227	231	273	315	2
UREA	NO	20	23	28	28	32	34	36	38	42	43	44	47	49	51	52	60	69	70	73	77	81	83	86	93	99	106	110	127	130	153	176	1
WHEAT & PEAS	COARSE	7	8	10	10	11	12	13	13	14	15	15	16	17	18	18	21	24	25	25	27	28	29	30	33	34	37	38	44	45	53	61	W,2,P,3.
	NO	30	35	41	42	49	50	54	57	62	64	66	70	74	76	78	90	103	106	109	115	122	125	129	140	148	159	165	190	194	229	264	
OATS & RICE	COARSE	4	5	6	6	7	7	8	8	9	9	10	10	11	11	11	13	15	16	16	17	18	18	19	21	22	23	24	28	28	33	39	2
	NO	17	19	23	24	27	28	30	32	35	36	37	39	41	42	43	50	57	59	61	64	68	69	72	78	82	89	92	106	108	127	147	
BARLEY	COARSE	5	6	7	7	8	8	9	10	10	10	11	11	12	12	13	15	17	17	18	19	20	20	21	23	24	26	27	31	32	38	43	2
	NO	20	23	28	29	33	34	36	39	42	43	44	47	49	51	52	60	69	71	74	77	82	84	87	94	100	107	111	128	130	154	177	
LUPIN & SOYBEAN	NO	40	47	55	57	65	68	72	77	83	86	88	93	98	102	104	120	137	141	146	153	162	166	172	186	198	213	220	253	259	305	352	3
SORGHUM	FINE	4	5	6	6	7	7	7	8	8	8	9	9	10	10	10	12	14	14	15	15	16	17	17	19	20	21	22	25	26	31	35	1
MILLET & CANARY	FINE	3	3	4	4	4	5	5	5	6	6	6	6	7	7	7	8	9	9	10	10	11	11	11	12	13	14	15	17	17	20	23	1
SUNFLOWER	NO	7	9	10	10	12	12	13	14	15	16	16	17	18	19	19	22	25	26	27	28	30	30	31	34	36	39	40	46	47	56	65	2
LINSEED	NO	14	16	19	20	23	24	25	27	29	30	31	33	34	36	36	42	48	49	51	54	57	58	60	65	69	74	77	89	91	107	123	1
LUCERNE	FINE	4	4	5	5	6	6	6	7	7	8	8	9	9	10	10	11	11	12	13	14	15	16	17	18	19	20	21	22	23	27	30	1
RYE GRASS	FINE	2	2	3	3	3	3	3	4	4	4	4	4	4	5	5	5	5	5	6	6	6	7	7	7	8	8	9	9	10	11	13	1

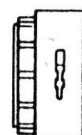
NO RESTRICTOR

RESTRICTOR

RESTRICTOR

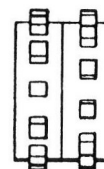


FINE

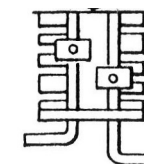


COARSE

**FLUTED ROLLER
DISTRIBUTOR**



**PEG TOOTH ROLLER
DISTRIBUTOR**



When lower sowing rates are required use restrictor.

Factors are:- COARSE = UNRESTRICTED x .25

FINE = UNRESTRICTED x .2

Grain or fertilizer can be sown from either the front or rear compartment. If grain or fertilizer is sown from both compartments, the sum of feed rates selected from each compartment should equal total rate required.

This implement delivers similar VOLUME of all materials.

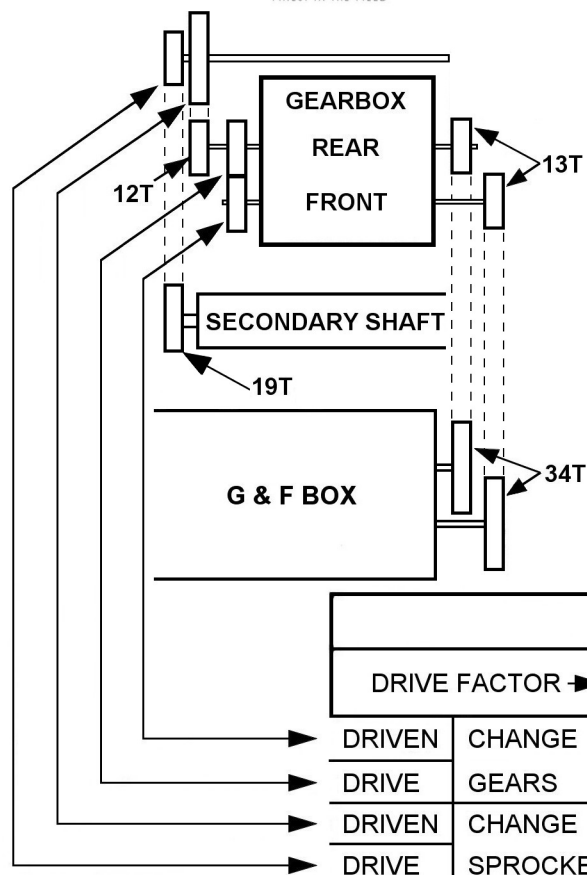
Sowing rates in kg/ha vary in proportion to density (kg/L) of materials.

Sowing rates for unlisted materials may be estimated as follows:-

$$\text{rate for wheat} \times \frac{\text{kg/L (for material)}}{.8 \text{ (kg/L for wheat)}}$$



DRIVE FACTOR CHART



If a lower rate than standard is required, use this chart to apply change gears and sprockets. The standard setup (ex factory) gives a drive factor of 0.43 (either on both compartments or on the front or rear only) by changing the gearing as described. This will achieve a rate of approximately 0.43 of that shown on the Grain and Fertilizer Chart (P/No. 33759).

To change the sprocket, remove the chain and flip the sprocket over. Add extra length to the chain as required and re-install.

To change the gears, simply remove the sellock pin and the existing 25 tooth gears and replace them with the optional 15 & 35 tooth gears. (Note: The change gears that are required to provide the lower drive factor to the front or rear compartment only, are not included as standard. If they are required, order parts 18490 (15 tooth gear) and 18491 (35 tooth gear)).

If a faster rate is required, a 15 tooth sprocket (18802, not included) may be used to increase the rate by 2.3 times, in place of the 34 tooth.

DRIVE FACTOR CHART

DRIVE FACTOR →		1.0 Front 1.0 Rear	0.43 Front 0.43 Rear	1.0 Front 0.43 Rear	0.43 Front 1.0 Rear
DRIVEN	CHANGE	25 Teeth	25 Teeth	15 Teeth *	35 Teeth *
DRIVE	GEARS	25 Teeth	25 Teeth	35 Teeth *	15 Teeth *
DRIVEN	CHANGE	23 Teeth	15 Teeth	15 Teeth	23 Teeth
DRIVE	SPROCKETS	15 Teeth	23 Teeth	23 Teeth	15 Teeth

* OPTIONAL EXTRA



Shearer Grass Seed Box

CHART P/No.24519

March 1982

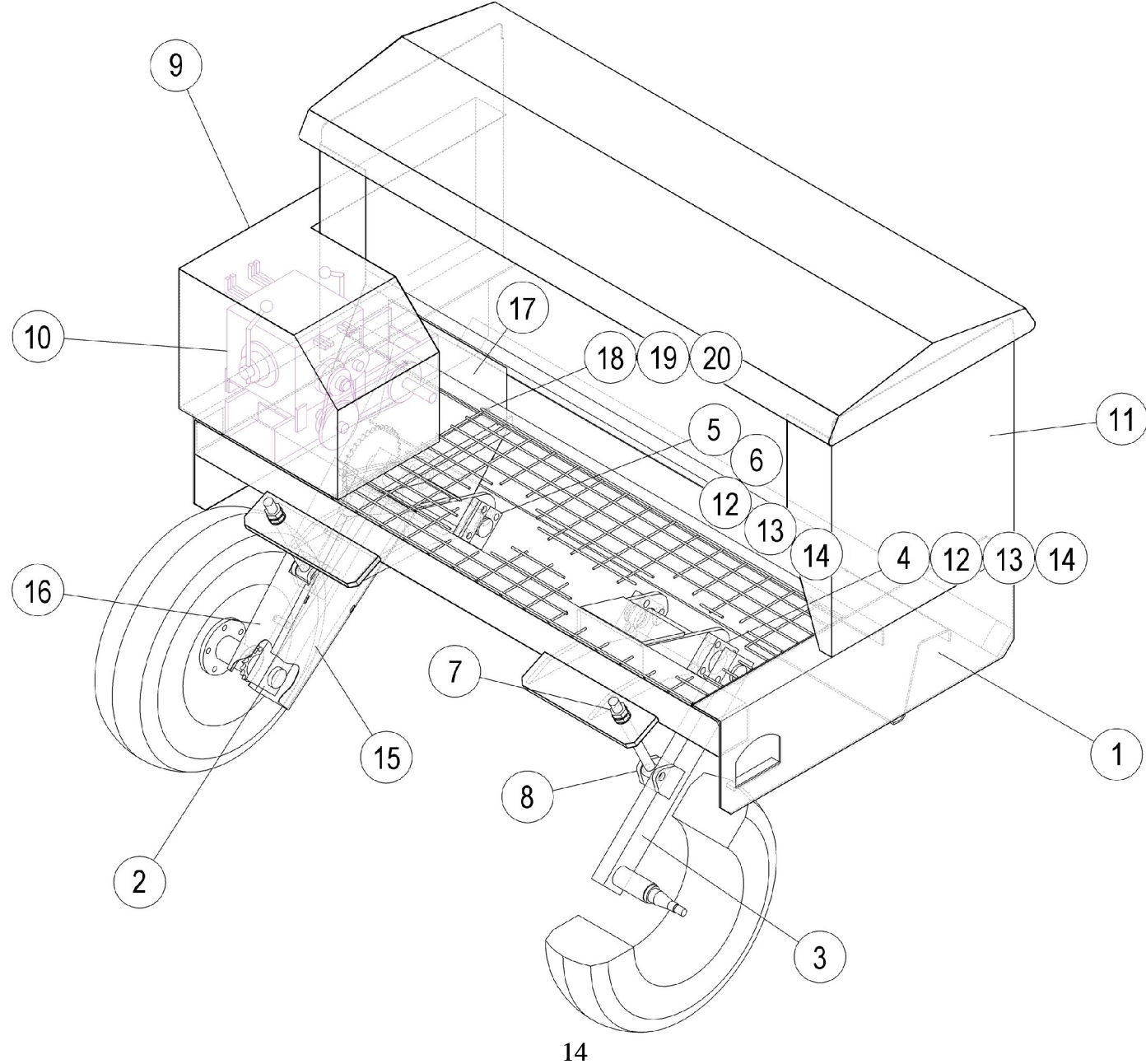
Quantities stated are in KILOGRAMMES per HECTARE and are approximate only. Check in field when sowing commences. For seeds not listed select nearest equivalent in size and type.

OPENING NUMBERS	1/2	1	2	3	4	5	6	7	8
COCKSFOOT	.2	.4	.8	1.4	2.0	2.2	2.9	3.1	3.5
BARREL CLOVER	1.0	2.1	3.9	6.6	7.3	8.1	9.4	10.8	11.5
PERENNIAL RYE	.7	.8	1.8	2.1	2.8	3.4	3.9	4.3	4.6
PHALARIS TUBEROSA	.5	1.1	2.5	3.6	4.8	5.9	7.0	8.0	8.4
CANARY	.6	1.3	2.5	3.9	5.0	5.9	7.0	7.7	8.1
EVENING PRIMROSE	.6	1.3	2.4	3.6	4.6	5.8	6.9	7.6	8.3
SUBTERRANEAN CLOVER	1.0	2.1	3.8	5.5	7.0	8.3	9.7	10.8	11.2
LUCERNE	1.0	2.1	4.2	6.2	8.0	10.0	11.6	13.2	14.2
STRAWBERRY CLOVER	.7	1.4	2.4	3.5					
RAPE	1.1	2.2	4.4						
CHOU MOULLIER	.5	1.1	2.7						
TURNIP	.8	1.6	3.1						

CONVERSION: 1 kg/ha = 0.9 lbs/acre
1 lb/acre = 1.12 kg/ha

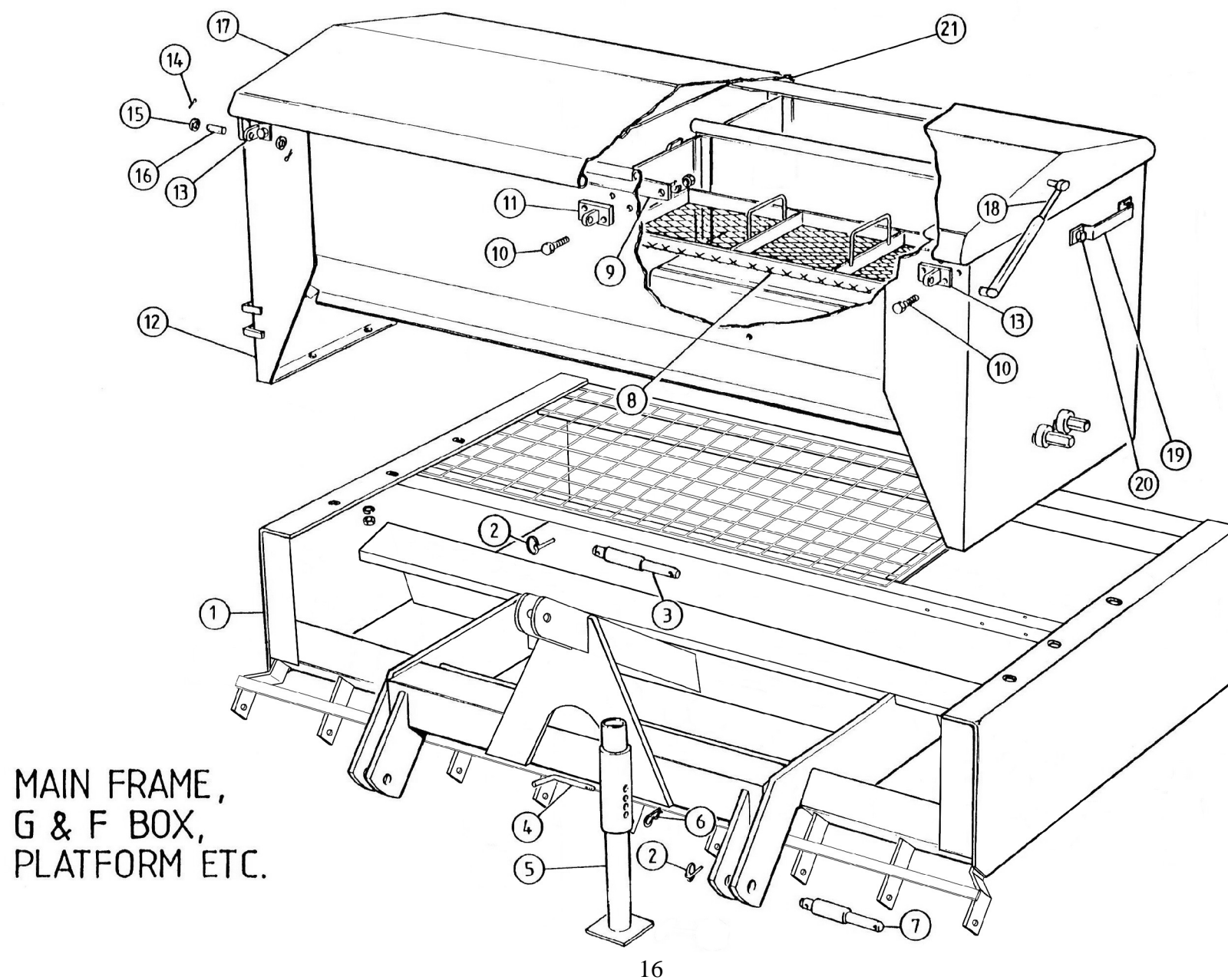
Machine delivers similar VOLUME of all materials.
Sowing rates for unlisted materials may be estimated as follows;

Rate for material = rate for lucerne $\times \frac{\text{kg/L (for material)}}{.8 \text{ (kg/L for lucerne)}}$



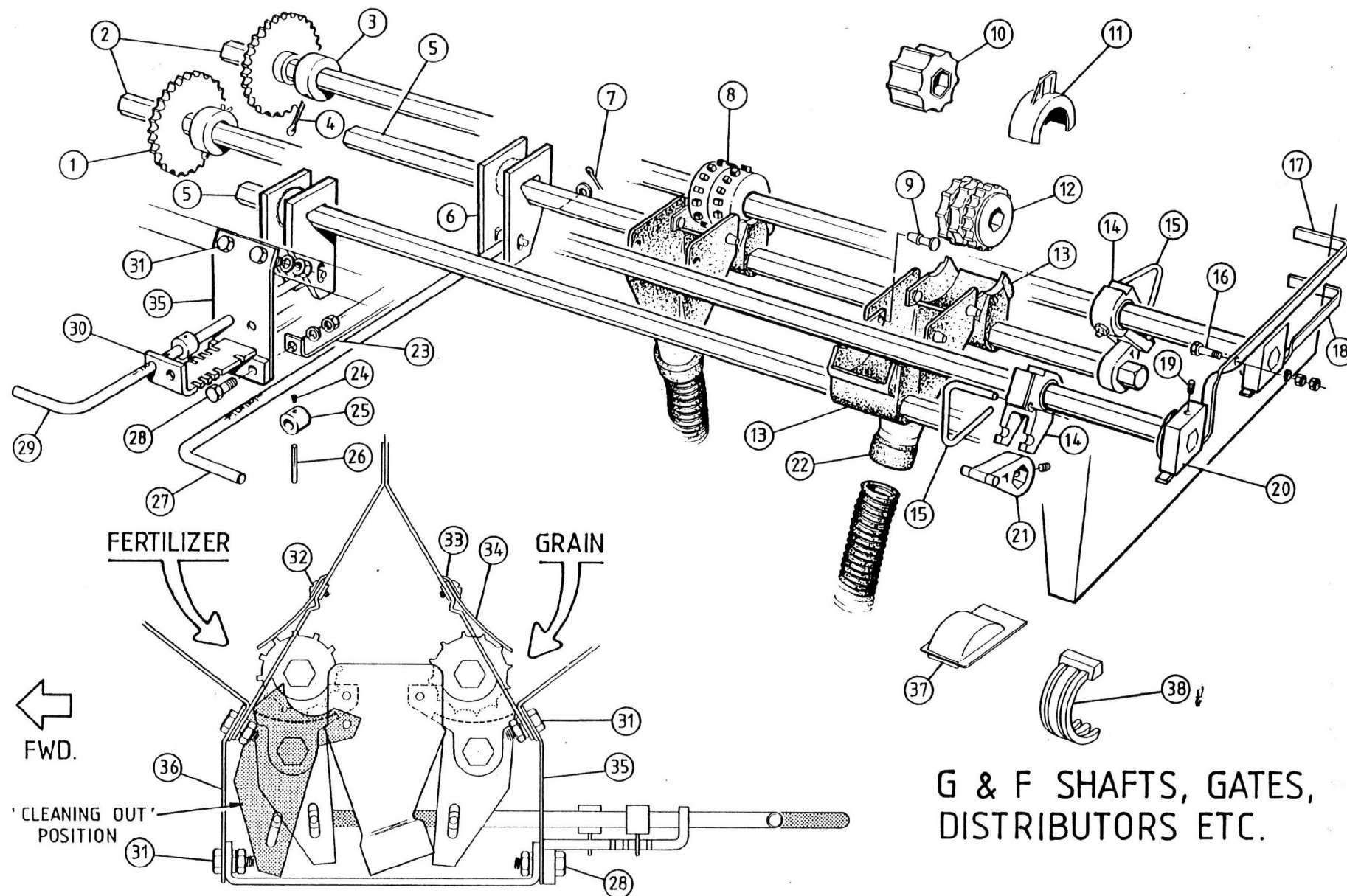
GENERAL ARRANGEMENT

ITEM	PART No	DESCRIPTION	ITEM	PART No	DESCRIPTION
1	36847	FRAME ASSEMBLY			
2	36861	ARM/CRANK ASSEMBLY L.H.			
3	36864	ARM/CRANK ASSEMBLY R.H.			
4	37728	PLATE Bearing Inner			
5	34528	BLOCK Bearing Outer			
6	37729	KEY Axle crank			
7	36868	SCREW ASSEMBLY			
8	34611	PIN Rod			
9	36871	GUARD Chain 10R			
10	36872	DRIVE ASSEMBLY			
11	36885	BOX ASSEMBLY Welded			
12	17888J1	BOLT Hex M16 x 65 Gr8.8			
13	18021	NUT Hex M16 Gr8			
14	17606J1	WASHER Spring 16mm			
15	36863	GUARD Chain			
16	37328	GUARD ASSEMBLY Chain			
17	37411	PLATE-GUARD ASSEMBLY Chain			
18	33259	BOLT Hex M8 x 20			
19	18464	NUT M8			
20	18465	WASHER Spring M8			
	36425	HECTAREMETER KIT – Farmscan (Not Illustrated)			



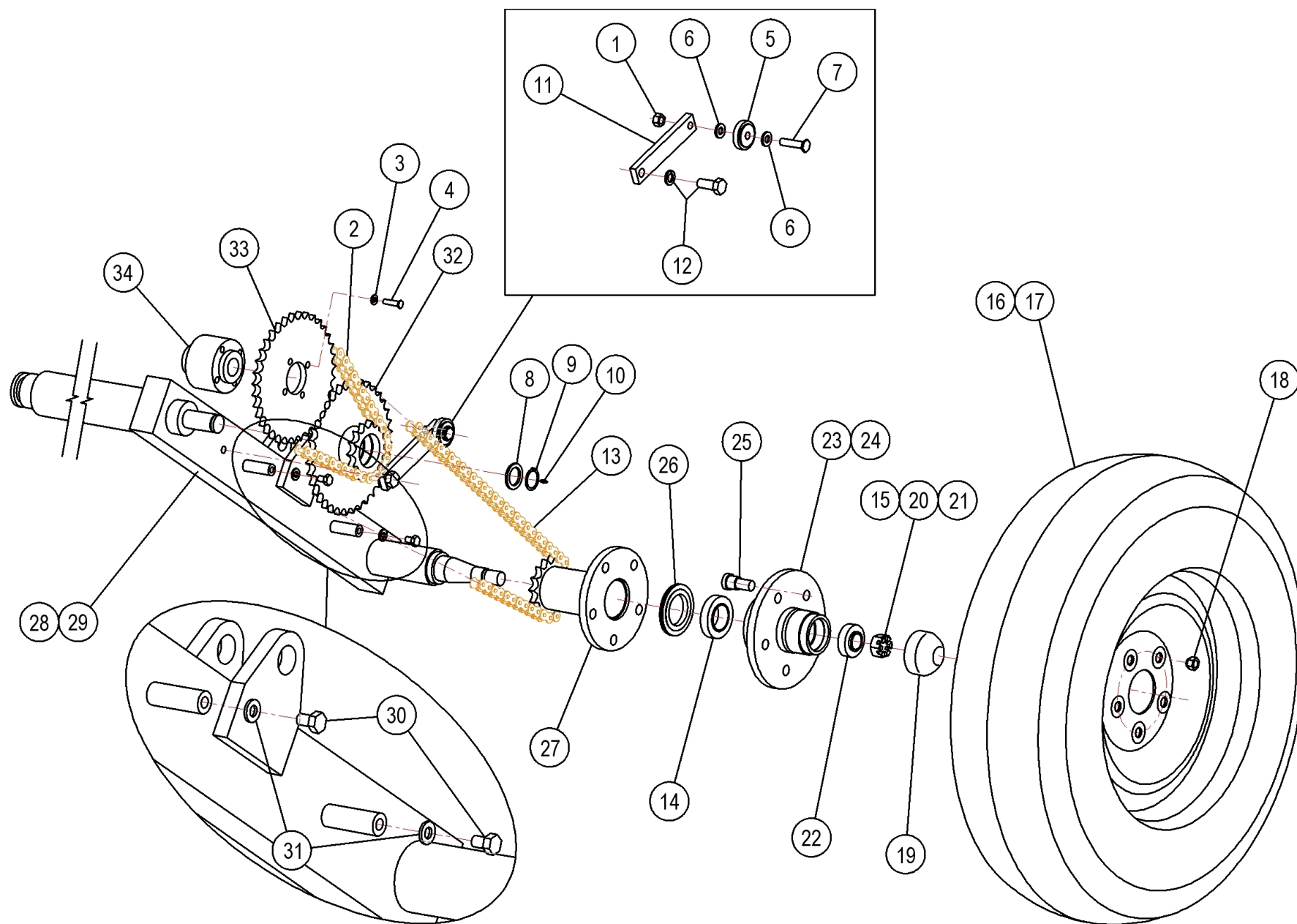
MAIN FRAME, GRAIN & FERTILIZER BOX, PLATFORM ETC.

ITEM	PART No	DESCRIPTION	ITEM	PART No	DESCRIPTION
1	36847	FRAME ASSEMBLY			ASSEMBLIES LID ASSY. COMPLETE 10 ROW GRAIN & FERTILIZER BOX COMPLETE 10 ROW
2	22889	LYNCH PIN & CLIP		32806	
3	CR160-95	PIN		36884	
4	H160-105	PIN			
5	34352	STAND ASSEMBLY			
6	H160-106	PIN			
7	11463	PIN			
8	32820	SCREEN ASSEMBLY			
9	18614	PLATE			
10	18877	SETSCREW			
	17776J1	WASHER			
	17777J1	NUT			
11	21757	LUG ASSEMBLY			
12	36885	BOX ASSEMBLY			
13	18612	LUG ASSEMBLY			
14	18594	PIN			
15	FBW4	WASHER			
16	16945J1	PIN			
17	32808	LID ASSEMBLY			
18	37481	GAS STRUT			
	17777J1	NUT			
	17776J1	WASHER			
	FBW4	WASHER			
19	23770	LATCH			
20	18613	SETSCREW			
	17776J1	WASHER			
	17777J1	NUT			
21	37494	FLEXIBLE DRAW LATCH			
	31242	BOLT			
	18504	WASHER			
	18656	NUT			



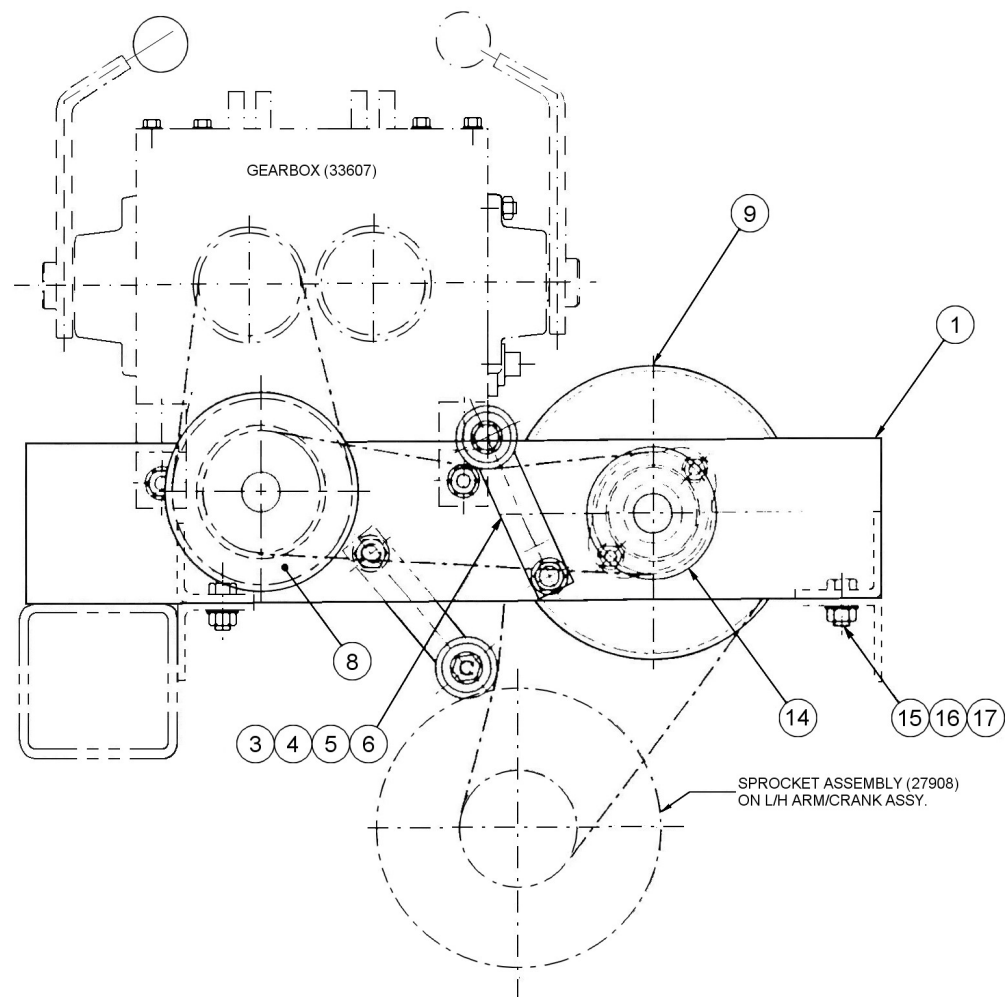
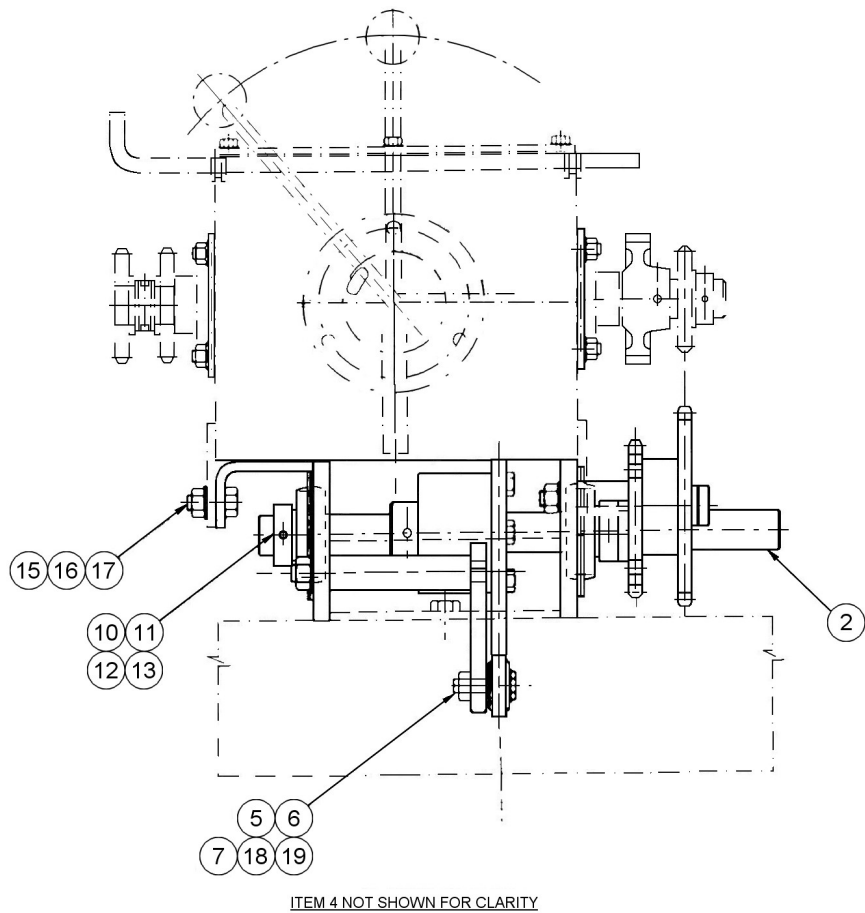
GRAIN & FERTILIZER SHAFTS, GATES, DISTRIBUTORS ETC.

ITEM	PART No	DESCRIPTION	ITEM	PART No	DESCRIPTION
1	30039	SPROCKET ASSY. 34T	31	18463	BOLT hex M8 x 25
	18892	SCREW soc. hd. M10 x 16 cone pt.	32	GB7G	BOLT/NUT gutter 5/8" x 1/4"
2	32813	SHAFT distributor 10 row 1835mm	33	21767	STRIP retainer (3 hole flap) 10 & 13R
3	18652	COLLAR Stop shaft		18636	STRIP retainer (4 hole flap)
4	17589J1	PIN Cotter Ø5 x 50	34	32818	FLAP box bottom 10 row
5	32816	SHAFT gate 10 row 1630mm	35	18599	BRACKET rear G & F lever
6	20504	LINKAGE ASSY. gate shaft	36	18808	BRACKET front G & F lever
	18893	SCREW soc. hd. M8 x 10 cone pt.	37	18424	COVER cut-off distributor
7	18647	WASHER steel thick – bright	38	18746	INSERT distributor
	20680	PIN 2.5 x 12 split cotter			
8	18435	WHEEL distributor peg			
9	18597	BUTTON cup			
10	31187	ROLLER ASSY. broad bean (optional)			
11	27897	RESTRICTOR wheel distributor			ASSEMBLIES
12	27896	WHEEL distributor fluted			
13	39994	GATE distributor		18847	BEARING DISTRIBUTOR ASSY. COMPLETE item 14
14	18848	BEARING shaft distributor			
	18422	BUSH shaft distributor		18648	KIT. INDICATOR GRAIN & FERTILIZER items 16 - 20
	18596	NIPPLE grease self tap			
15	20525	RETAINER bearing		23470	GUAGE Gate 1.5mm peg tooth roller
16	18659	SET SCREW hex M16 x 25		29939	GUAGE Gate 3mm fluted roller
	FBW2	WASHER Ø1/4" service		33657	GUAGE Gate 4mm broad bean roller
	18656	NUT hex M6			
17	18650	INDICATOR fertilizer		32198	KIT. FLUTED ROLLER & RESTRICTOR items 11 & 12
18	18651	INDICATOR grain			
19	18663	SCREW soc. hd. M10 x 10			REMOTE GREASING KITS
20	18649	BLOCK indicator		37493	KIT, REMOTE GREASING 10 row (Not illustrated)
	FBW11	WASHER 1" service			
21	18849	HINGE gate			
	18789	SCREW soc. hd. M6 x 8			
22	39948	CUP Hose			
23	18657	BRACE Support			
24	18789	SCREW soc. hd. M6 x 8			
25	18503	BUSH small adjusting			
26	18515	PIN sellock Ø3 x 20			
27	20502	LEVER front			
28	19151	SET SCREW hex M8 x 25			
29	20503	LEVER rear			
30	18598	BRACKET ASSY. gate lever			



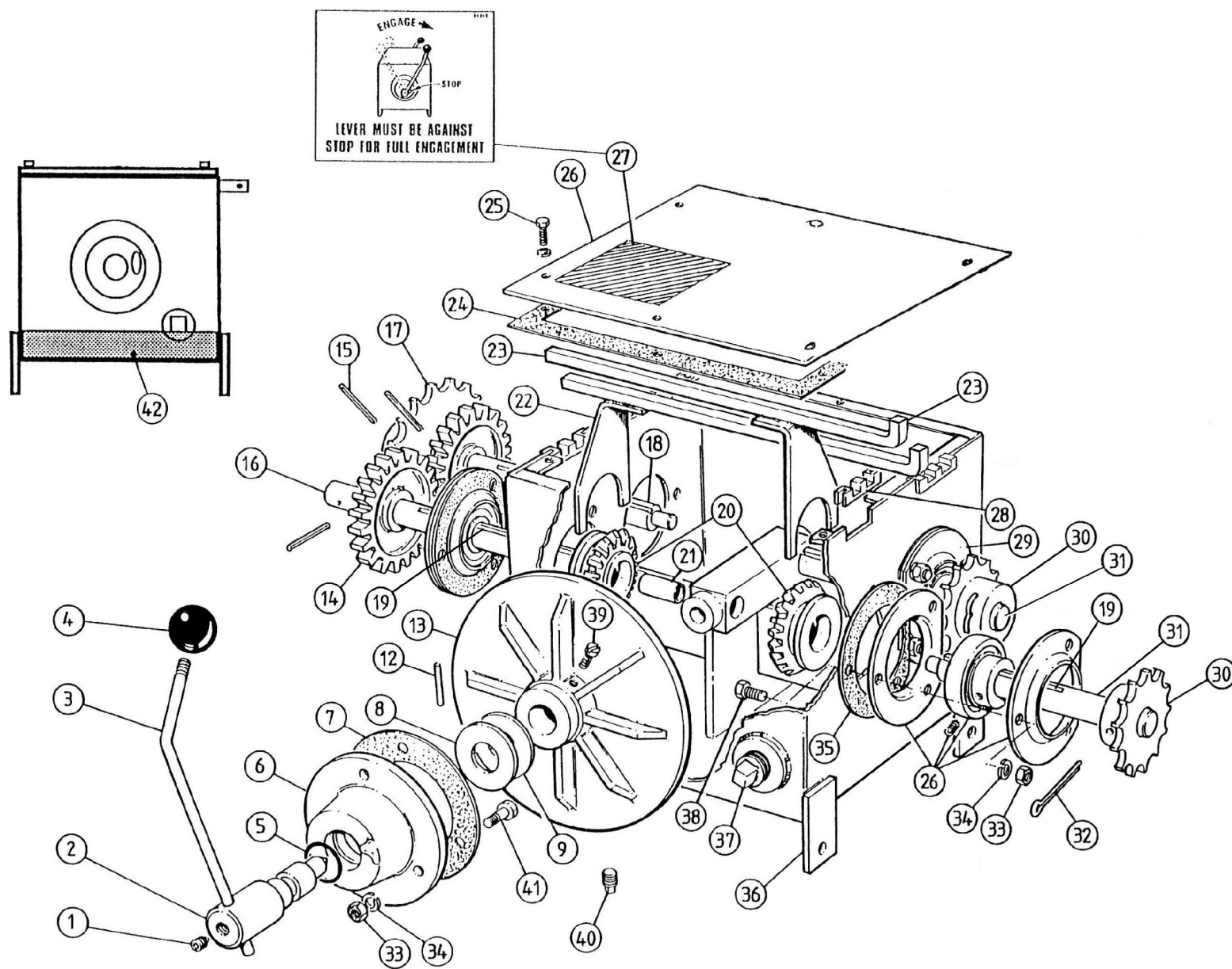
DRIVES, PRIMARY

ITEM	PART No	DESCRIPTION	ITEM	PART No	DESCRIPTION
1	17604J1	NUT Hex M10	31	18465	WASHER Spring Ø8mm
2	24798	CHAIN Roller 5/8"P x 67L	32	27908	SPROCKET ASSY. Double 15T x 36T
	14214J1	LINK Cranked 5/8"P		37414	BEARING (2)
	10615	LINK Connecting 5/8"P	33	18525	SPROCKET Drilled 35T 5/8"P
3	18465	WASHER Spring 8mm	34	34586	BOSS Sprocket
4	18463	BOLT Hex M8			
5	18668	ROLLER Tensioner chain			
6	FBW4	WASHER Flat Ø3/8"			
7	18669	BOLT Special tensioner			ASSEMBLIES
8	18534	WASHER Clutch			
9	18675	CIRCLIP 25 I.D.	34004		WHEEL ASSY 14" Items 16 & 17
10	18596	NIPPLE Grease self tap			
11	34588	ARM Tensioner chain long	19073		HUB ASSY (R/H ONLY) Items 18, 24 & 25
12	18876	SETSCREW M12			
	17616J1	WASHER Spring Ø12mm			
13	32787	CHAIN Roller 5/8"P x 95L			
	10615	LINK			
	14214J1	LINK			
14	16850J1	BEARING Inner			
15	16859J1	PIN Cotter 4 x 32			
16	16857J1	TYRE 185 x 14 x 4 ply			
17	16856J1	RIM ASSY. 14"			
18	19072	NUT Cone ½" UNF			
19	16849J1	CAP Dust			
20	16853J1	NUT Slotted ¾" UNF			
21	FBW9	WASHER Flat Ø¾"			
22	16851J2	BEARING Outer			
23	16848J2	HUB Drive wheel			
24	16848J2	HUB R.H.			
25	37320	STUD Wheel ½" (L.H. only)			
	18414	NUT Hex M12 gr8 (L.H. only)			
	17616J1	WASHER Spring Ø12mm (L.H. only)			
	19071	STUD Wheel ½" UNF (R.H. only)			
26	36954	SEAL Triple lipped			
27	37319	EXTENSION / SPROCKET 16T			
28	36861	AXLE / CRANK ASSY. L.H.			
29	36864	AXLE / CRANK ASSY. R.H.			
30	18749	SETSCREW Hex M8 x 12			



DRIVES, SECONDARY

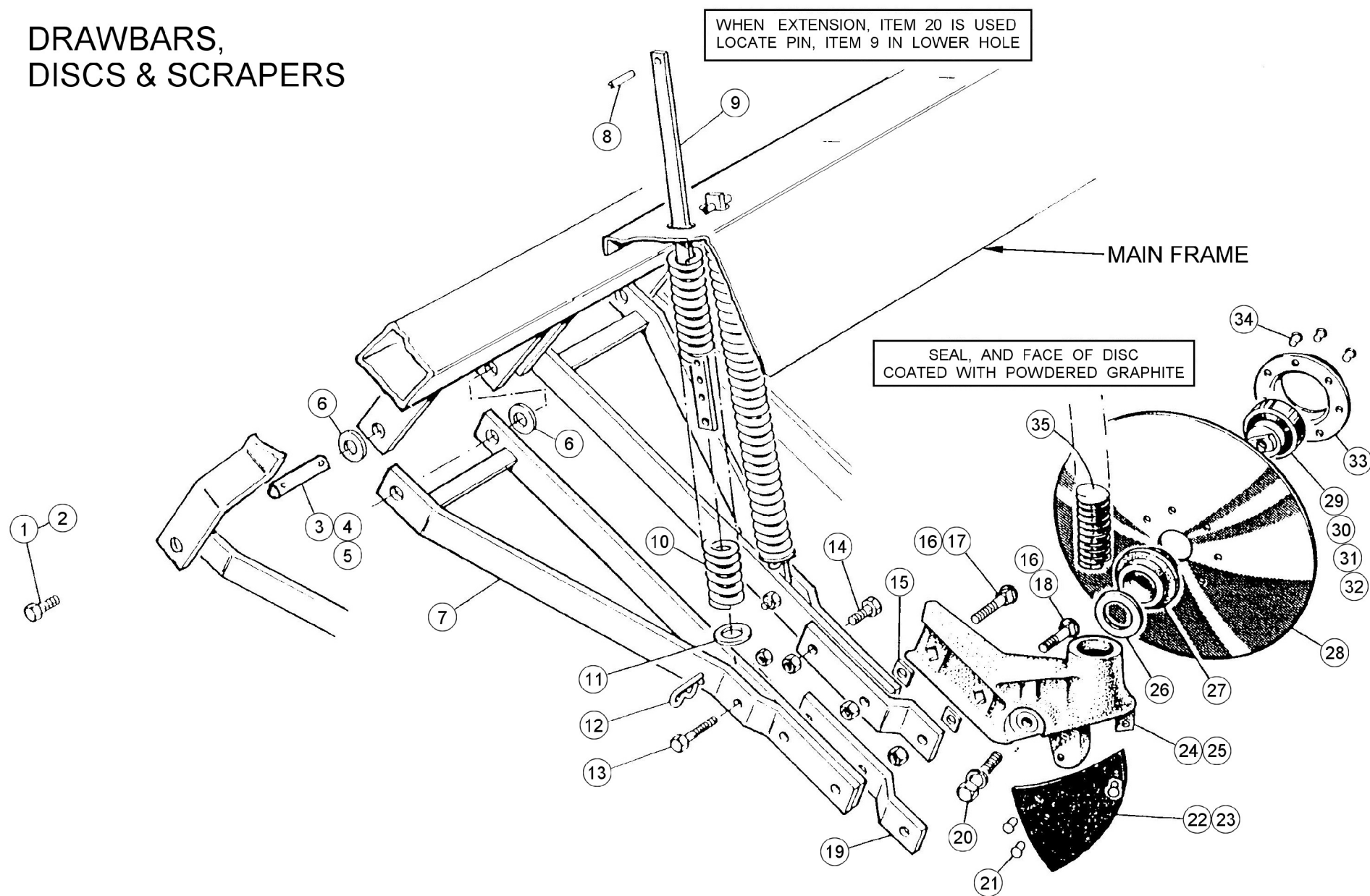
ITEM	PART No	DESCRIPTION	ITEM	PART No	DESCRIPTION
	36872	DRIVE ASSEMBLY – VINEYARD SEEDER Items 1-19			
	37966	DRIVE ASSEMBLY – VINEYARD TYNE DRILL Items 2-20			
1	36876	CRADLE ASSY. (Vineyard Seeder only)			
2	36882	SHAFT secondary			
3	34590	TENSIONER ASSY. offset			
4	18727	BOLT hex M12 x 40			
5	18414	NUT HEX M12 Gr8.8			
6	17616J1	WASHER spring M12			
7	22898	TENSIONER ASSY. chain			
8	37546	SPROCKET & BRG. ASSY. 15T/23T			
9	34585	SPROCKET ASSY. 35T			
10	18715	BEARING FLANGE			
11	18437	BOLT M8 x 35 Gr8.8			
12	18465	WASHER spring M8			
13	18464	NUT M8			
14	18496	SPROCKET driven 19T			
15	18520	BOLT M10 x 30			
16	17777J1	NUT M10			
17	17776J1	WASHER spring M10			
18	36883	PIPE MD/BL 15NB x 2.6mm – 89mm			
19	22095	BOLT M12 x 120 Gr4.6			
20	37580	CRADLE ASSY. (Vineyard Tyne Drill – in place of Item 1)			
<p>Note: The drive chains between gearbox and hopper are the following; Inner: P/N 34753 Outer: P/N 34754</p>					



GEARBOX

ITEM	PART No	DESCRIPTION	ITEM	PART No	DESCRIPTION
1	18663	SCREW grub M10 x 10	38	18502	SETSCREW hex M8 x 16
2	32844	SHAFT sungear	39	18474	SCREW locating
3	33276	LEVER gearbox	40	18493	PLUG drain ¼" BSPT
4	10440	KNOB selector	41	18463	BOLT hex M8 x 20
5	18512	'O' RING 1 ¼" x 1 ½" x 1/8"	42	18511	OIL SAE 120 I L
6	33278	CAP END gearbox			
7	18462	GASKET cap end			
❖8	20518	WASHER flat I.D. 24 x 15t			
❖9	18466	WASHER flat Ø24		33607	GEARBOX, COMPLETE Items 1-39
❖10	36777	SHIM WASHER (0.1mm) – not shown			
❖11	36778	SHIM WASHER (0.7mm) – not shown			
12	18661	PIN sellock Ø5 x 45			
13	32840	GEAR sun			
14	33622	GEAR input 25T x 8P			
15	27307	PIN sellock Ø6 x 40		18490	GEAR input 15 tooth (optional)
16	33619	SHAFT output – grass		18491	GEAR input 35 tooth (optional)
17	33764	SPROCKET 12T			
18	33620	SHAFT input			
19	18500	KEYSTEEL 90mm long			
▲20	42512	PINION ASSY.			
21	32845	BUSH sintered			
22	36268	SELECTOR ASSY. numbered gear			
23	36266	SELECTOR ASSY. lettered gear			
24	18508	GASKET cover top			
25	17966J1	SETSCREW M6 x 12			
	18504	WASHER spring Ø6			
26	18506	LID gearbox			
27	34362	TRANSFER gearbox engagement			
28	18460	GUIDE nylon			
29	32847	BEARING 'Y'			
30	30041	SPROCKET 13T x 5/8"P			
31	33617	SHAFT super			
32	17589J1	PIN cotter Ø5 x 50			
33	18464	NUT hex M8	▲		Note: Previous pinion assembly with brazed key use P/N 32841
34	18465	WASHER spring Ø8			
35	18475	GASKET bearing	❖		Note: Shim washers are used as required to provide correct fit of sun gear
36	33608	BOX ASSY. gear			
		includes item 38			
37	18513	PLUG ¾" BSP sq. hd.			

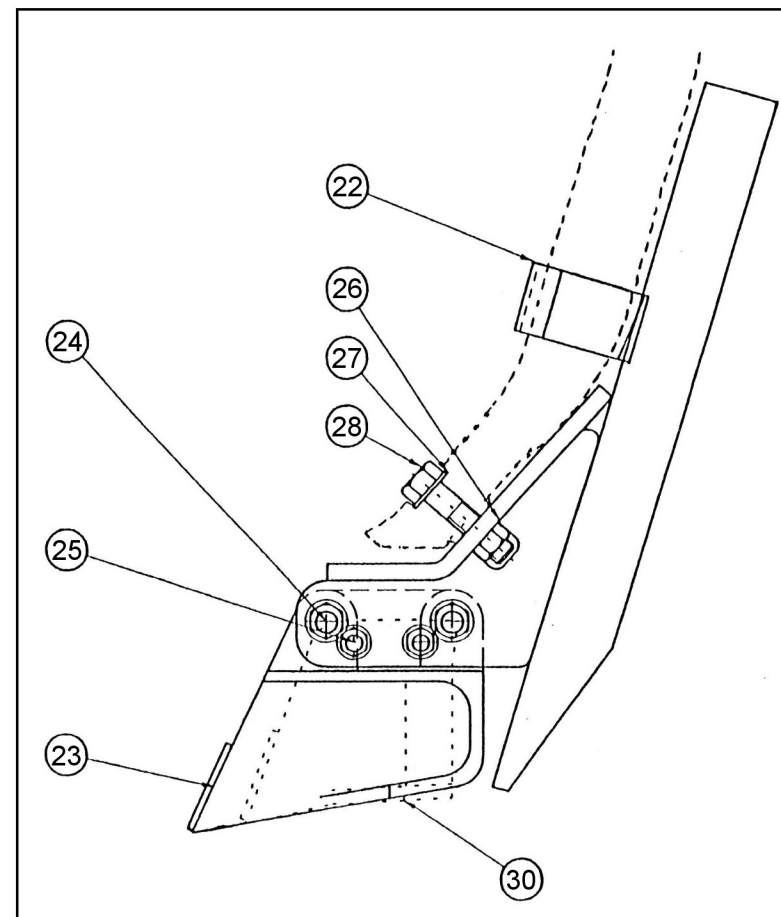
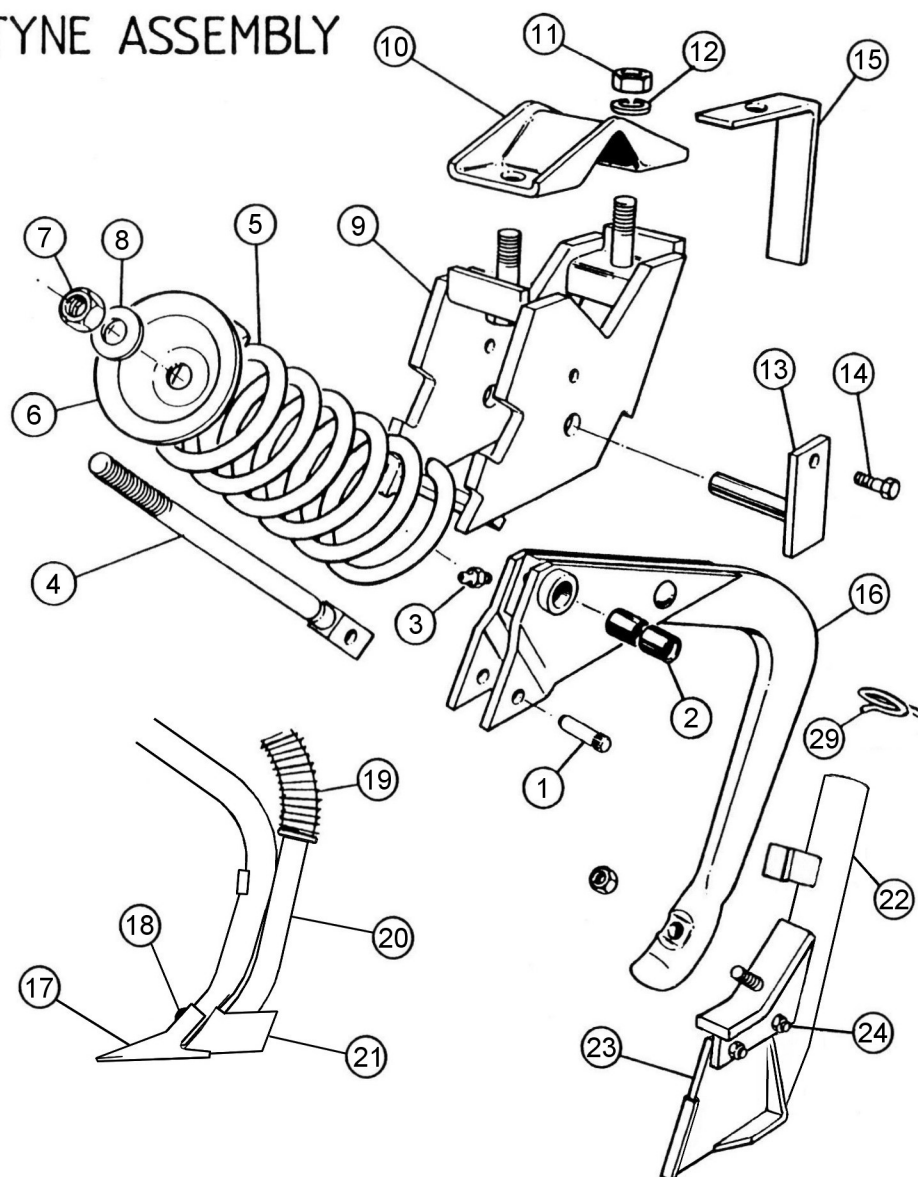
DRAWBARS, DISCS & SCRAPERS



DRAWBARS, DISCS AND SCRAPERS ETC.

ITEM	PART No	DESCRIPTION	ITEM	PART No	DESCRIPTION
1	17665J1	BOLT hex M20 x 50	35	600-719	HOSE Barflow, 31.5mm
2	22026	NUT nyloc M20			
3	33104	PIN drawbar short			
4	33108	PIN drawbar long (center)			<u>ASSEMBLIES</u>
5	17877J1	PIN cotter – split			
6	FBW9	WASHER flat back			
7	33094	DRAWBAR ASSY	33101	ROD ASSY.	Spring Items 8 & 9
8	18860	PIN sellock 10 x 40			
9	33102	ROD spring			
10	33100	SPRING	33092	UNIT	Disc/drawbar extended R.H. Items 8, 15, 16, 18-22, 24, 27-34
11	10392	WASHER structural 7/8"			
12	20845	PIN hair 5mm			
13	18927	BOLT hex M10 x 50	33093	UNIT	Disc/drawbar extended L.H. Items 8, 15, 16, 18-21, 23, 25-34
	21424	NUT hex M10 cone			
14	19974	BOLT hex M12 x 45			
	18414	NUT hex M12	33090	UNIT	Disc/drawbar R.H. Items 8, 16, 17, 21-22, 24, 27-34
15	490	SPACER breast adjustment			
16	33099	BOLT cup hd. Sq. M12 x 50			
17	33098	BOLT cup hd. Sq. M12 x 65 (ext. d/bar)	33091	UNIT	Disc/drawbar L.H. Items 8, 16, 17, 21, 23, 25, 26-34
18	26892	BOLT cup hd. Sq. M12 x 45 (ext. d/bar)			
19	99-34	EXTENSION stagger			
20	HR115	BOLT hex 5/8" BSW x 2-1/4"	10368	BOOT/SCRAPER ASSY. R.H.	Items 21, 22 & 24
	17606J1	WASHER spring 16mm			
21	31242	BOLT hex M6 x 30 Gr 8.8 (1 off)	10648	BOOT/SCRAPER ASSY. L.H.	Items 21, 23 & 25
	18659	BOLT hex M6 x 25 Gr 8.8 (2 off)			
	18656	NUT hex M6			
	18504	WASHER spring 6mm	10367	DISC/BEARING ASSY.	Items 28-34
22	E99-9	SCRAPER disc R.H.			
23	E99-10	SCRAPER disc L.H.			
24	10338	BOOT R.H.			
25	10647	BOOT L.H.	10369	BOOT & DISC ASSY. R.H.	Items 21-22, 24, 26-34
26	10364	WASHER Shim 26g			
27	12348	SEAL ballrace			
28	10342	DISC 13" dia	10649	BOOT & DISC ASSY. L.H.	Items 21, 23, 25, 26-34
29	34084	SPINDLE bearing			
30	34085	COLLAR seal			
31	29751	BEARING ball - deep	11594	BEARING & CAGE ASSY.	Items 29 - 33
32	29843	O'RING			
33	10341	CAGE bearing			
34	FHR2	RIVET flat hd. ¼" x ½"			

TYNE ASSEMBLY



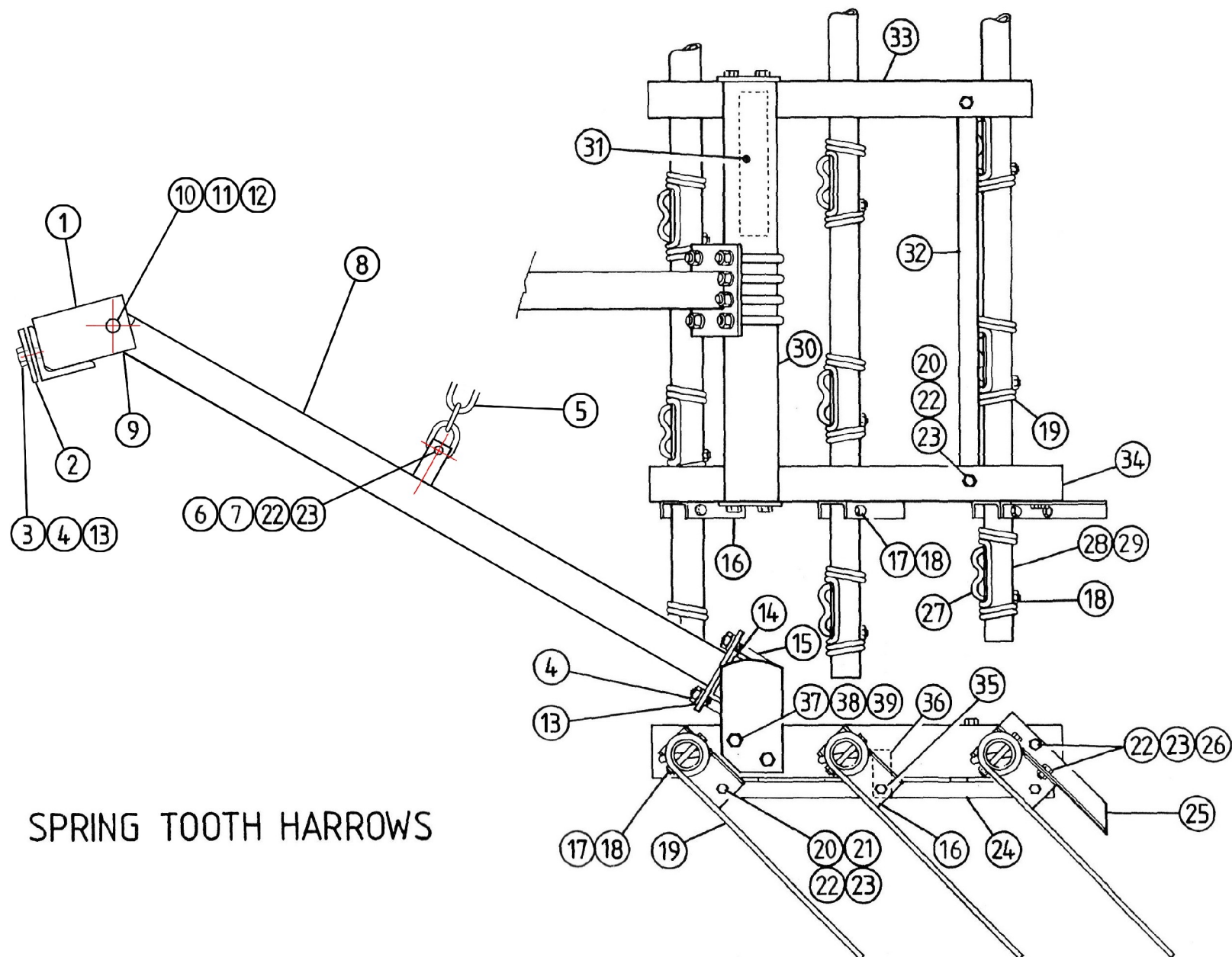
THE PASTURE DRILL BOOT ASSEMBLY IS A MULTI-POINT ADAPTOR, TO ACCEPT EITHER THE MINI T-BOOT OR THE BAKER INVERTED T-BOOT.

VINEYARD TYNE DRILL - TYNE ASSEMBLY, BOOTS & POINTS ETC.

ITEM	PART No	DESCRIPTION	ITEM	PART No	DESCRIPTION
1	18813	PIN			
2	21612	TYNE		22902	TYNE & SPRING ROD ASSY. items 1, 2, 3, 4 & 16
3	18596	NIPPLE		22900	TYNE ASSY. COMPLETE '580' EDGE - ON
4	22913	ROD			items 5 - 14 & 22902
5	22927	SPRING			
6	22926	CUP			
7	22026	NUT		33256	MINI 'T' BOOT items 22 - 24, 26 - 29
8	18312	WASHER			
9	22921	CARRIER ASSY.			
10	22925	CLAMP		36712	BAKER INVERTED 'T' BOOT
11	18021	NUT			Items 22, 25 - 30
12	17606J1	WASHER			
13	22931	PIN ASSY.			
14	18824	BOLT			
	17776J1	WASHER			
	17777J1	NUT			
15	22097	BRACKET			
16	22904	TYNE ASSY.			
17	16805K1/6	POINT			
18	18098	BOLT/NUT			
	17616J1	WASHER			
19	21863	HOSE			
	21839	HOSE			
20	36710	BOOT ASSY.			
21	27796	ATTACHMENT			
22	36713	BOOT ASSY.			
23	33258	POINT			
24	17776J1	WASHER			
	17777J1	NUT			
	22434	BOLT			
25	18465	WASHER			
	18464	NUT			
	36892	BOLT			
26	18414	NUT			
27	22689	WASHER			
28	36893	BOLT			
29	35341	CLIP			
30	36711	POINT			

GRASS SEED BOX (OPTIONAL)

ITEM	PART No	DESCRIPTION	ITEM	PART No	DESCRIPTION
1	16945J1	PIN Cotter Ø3.2 x 20	36	GBD-1	DISTRIBUTOR ASSY.
2	20282	ARM Agitator		34058	RIVET Pop Ø3/16"
3	1-85	SCREW Grub M10 x 10	37	22156	BOLT Gutter 3/16" x 5/8"
4	1-53	ROLLER Agitator		19742	NUT Nyloc
5	1-51	PIN Roller agitator crank	38	1-75A	WASHER Distributor
6	17883J1	PIN Cotter	39	1-87A	SHUTOFF
7	1-21A	CRANK Agitator rod	40	19747	SPROCKET ASSY. 16T
8	32989	SHAFT Distributor 10 row	41	1-80	BEARING
9	33125	AGITATOR ASSY. 10 row		18596	NIPPLE Grease – self tap
10	34631	BOX SUB ASSY. 10 row	42	42747	CHAIN ½" extended 39L
11	33117	LID ASSY. 10 row		24473	LINK Connecting ext. ½"
12	18656	NUT Hex M6	43	19724	SPROCKET ASSY. 16T x ½" P
13	18504	WASHER Spring Ø6		18663	SCREW Cap. Soc. hd. M10 x 10
14	34048	BRACKET Support box	44	42746	SHAFT Drive hex 525
15	18655	SETSCREW M6 x 16	45	27691	LOCATOR Drive shaft
16	19569	BOLT Hex M6 x 20		18663	SCREW Cap. Soc. hd. M10 x 10
17	34051	SUPPORT Agitator	46	19733	BEARING
18	19739	HINGE		18422	BUSH Shaft distributor
	19877	RIVET Pop Ø3/16"	47	30026	CHUTE G.S.B.
19	30455	INDICATOR ASSY.	48	17589J1	PIN Cotter Ø5 x 50
20	19877	RIVET Pop Ø3/16"	49	24891	SUPPORT Shaft
21	19355	RIVET Pop Ø5/32"	50	42745	SUPPORT Shaft (special)
22	19337	LATCH & STRIKE ASSY.	51	37970	BRACKET ASSY GSB
23	18872	SCREW Pan hd. Ø5/32"	52	18859	BOLT Hex M12 x 35
	SWP14	WASHER Spring Ø3/16"		18414	NUT Hex M12
	18873	NUT Hex Ø5/32"		17113J1	WASHER PLUG ROD CONNECTING
24	303-31	SETSCREW		17616J1	WASHER SPRING 12mm
25	1-21	COLLAR Agitator	53	19722	SPROCKET ASSY. 38T x ½"
26	19151	BOLT Hex M8 x 25		18663	SCREW Cap. Soc. hd. M10 x 10
	18465	WASHER Spring 8mm	54	42748	CHAIN ½" extended 33L
27	34052	LEVER ASSY		24473	LINK Connecting ext. ½"
28	22000	NUT Wing M8		27407	LINK Connecting cranked ½"
	18465	WASHER Spring Ø8	55	42749	GUARD Chain (G.S.B.)
29	21999	BOLT Cup hd. Sq. neck M8 x 25			
30	18596	NIPPLE Grease	56	24519	TRANSFER G.S.B. Sowing Chart (not shown)
31	18533	FERRULE Clutch			
32	24193	PEG Lever		39605	KIT GSB assembly – Vineyard Seeder
33	24194	ROLLER Feed			
34	17579J1	PIN Cotter Ø5 x 22		39604	BOX ASSY GSB 10R VS
35	1-86A	ROLLER fluted			



SPRING TOOTH HARROWS

SPRING TOOTH HARROWS

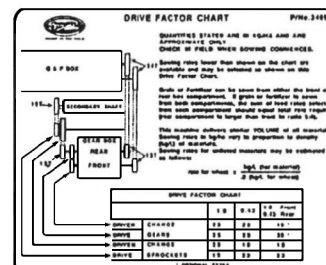
ITEM	PART No	DESCRIPTION	ITEM	PART No	DESCRIPTION
1	37904	BRACKET ASSY.			
2	37905	PLATE			
3	19974	BOLT			
4	18414	NUT			
5	37901	CHAIN			
6	19046	BOLT			
7	FBW6	WASHER			
8	37900	ARM ASSY			
9	18596	NIPPLE			
10	18879	BOLT			
11	FBW8	WASHER			
12	18814	NUT			
13	17616J1	WASHER			
14	22820	CHANNEL			
15	22819	CLAMP			
16	22821	LOCATOR			
17	18897	BOLT			
18	21424	NUT			
19	21874	TOOTH			
20	18520	BOLT			
21	FBW4	WASHER			
22	17776J1	WASHER			
23	17777J1	NUT			
24	24185	ROD ASSY.			
25	22827	LEVER			
26	18429	SET SCREW			
27	22828	RETAINER			
28	24188	BAR			
29	24189	BAR			
30	31122	BAR ASSY.			
31	15871J3	TRANSFER			
32	30307	STRAP			
33	22825	TIE BAR			
34	22826	TIE-BAR			
35	22434	BOLT			
36	27438	GUIDE			
37	18123	SET SCREW			
38	18021	NUT			
39	17606J1	WASHER			

TRANSFERS



JOHN SHEARER

Vineyard Seeder



GRAIN & FERTILIZER CHART Sowing at 100mm spacing. Price \$11

QUANTITIES STATED ARE IN KILOGRAMS AND LITRES PER HECTARE ONLY.
CHANGES IN FUEL CONSUMPTION COMPOUND.

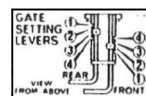
DRIVE FACTOR CHART	FR	R	FR + R
FRONT	1.0	1.0	2.0
REAR	1.0	1.0	2.0
GRAND TOTAL	2.0	2.0	4.0

100% for wheat
75% for other crops

UNMADE DRILL
TYPE PRESSURES - are important

OVER INFLATION - i.e. wear - increases
sowing depth variations as ground conditions vary
UNDER INFLATION can result in tyre failures

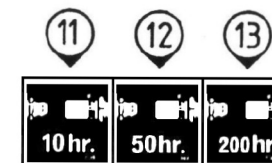
HP SIZE	TYRE SIZE	PRESSURE
10 ROW	183 x 16 x 8 ply	188 kPa (120 psi)
12 ROW	183 x 16 x 8 ply	188 kPa (120 psi)
14 ROW	183 x 16 x 8 ply	188 kPa (120 psi)
16 ROW	183 x 16 x 8 ply	188 kPa (120 psi)



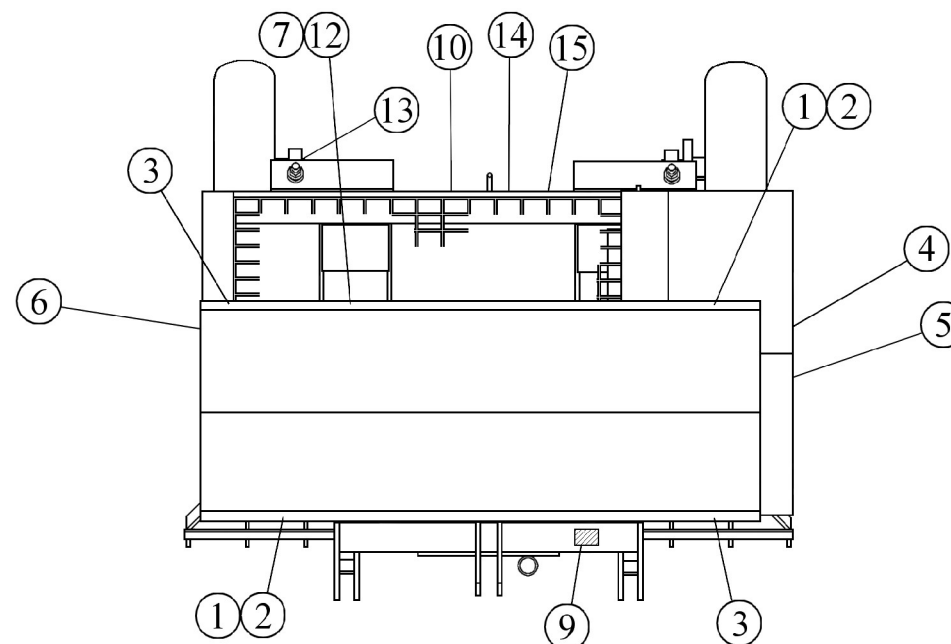
sling here



WARNING
DO NOT CARRY BAGS
OF GRAIN AND FERTILIZER
ON LOADING PLATFORM

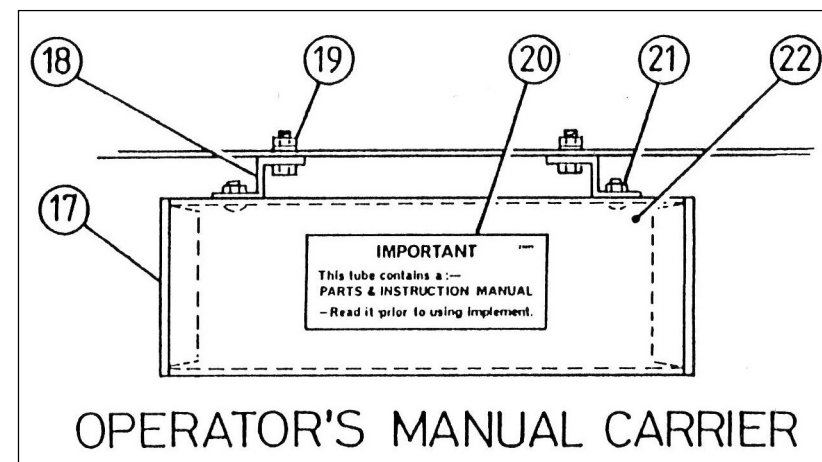


DANGER
DO NOT RIDE ON THIS IMPLEMENT!



TRANSFERS

ITEM	PART No	DESCRIPTION
1	36242	TRANSFER John Shearer trademark
2	15875J2	TRANSFER John Shearer
3	37566	TRANSFER Vineyard Seeder
4	37567	TRANSFER Chart – drive factor
5	33759	TRANSFER Chart – grain & fertilizer
6	33269	TRANSFER Tyre pressures
7	22124	TRANSFER Gate setting levers
8	15854J1	TRANSFER Sling here
9	15968J1	PLATE J.S. model & serial no.
	16161J1	SCREW Drive 5/16" x 0.116 x 4U
10	15953J1	TRANSFER Warning do not carry bags
11	27463	TRANSFER Grease 10 hrs
12	27464	TRANSFER Grease 50 hrs
13	27409	TRANSFER Grease 200 hrs
14	22699	TRANSFER Do not ride on implement
15	15880J1	TRANSFER Protect your equipment
16	21532	KIT – CARRIER PARTS MANUAL Items 17 – 22
17	20813	PLUG Tube carrier parts manual
18	20810	SUPPORT Tube carrier parts manual
19	17986J1	SETSCREW Hex M6 x 12
	FBW2	WASHER Flat Ø¼"
	18656	NUT Hex M6
20	20809	TRANSFER Parts manual
21	GB4	BOLT/NUT Gutter ¼" BSW x ½"
22	20814	TUBE Carrier parts manual



CALIBRATION FACTORS FOR FARMSCAN HECTAREMETER

(See page 9 of Farmscan “Installation and Operating Instructions” booklet)

NOTE:

- Settings are for shaft sensor installation with two magnets mounted on the secondary shaft.
- For improved accuracy follow procedure outlined on page 9 of the “Installation and Operating Instructions” booklet (Shaft Sensor section)

USE THE FOLLOWING SETTINGS FOR JOHN SHEARER MACHINES

IMPLEMENT TYPE	IMPLEMENT SIZE	TYRE	H1	H2
6.90 TCD	21 ROW	16.9 x 28 x 6P	5133	3.78
	27 ROW	18.4 x 30 x 8P	5255	4.86
	33 ROW	23.1 x 30 x 8P	5168	5.94
	27 ROW 4 BIN	23.1 x 30 x 8P	5712	4.86
4.90 TCD	20 ROW	14.9 x 24 x 8P	5255	3.60
	20 ROW	16.9 x 28 x 6P	4823	3.60
	24 ROW	16.9 x 28 x 6P	5133	4.32
	28 ROW	18.4 x 30 x 8P	5255	5.04
	24 ROW 4 BIN	18.4 x 30 x 8P	5190	4.32
VINEYARD SEEDER	10 ROW	185 x 14 x 4P	4948	1.80
LINKAGE DRILL	10 ROW	235/75 x 15 x 4P	5132	1.80
	13 ROW	235/75 x 15 x 4P	5132	2.34
	16 ROW	235/75 x 15 x 4P	5132	2.88
	19 ROW	235/75 x 15 x 4P	5132	3.42